

# **Southeast Area Overview**

# Jamie Whitten Delta States Research Center Stoneville, MS

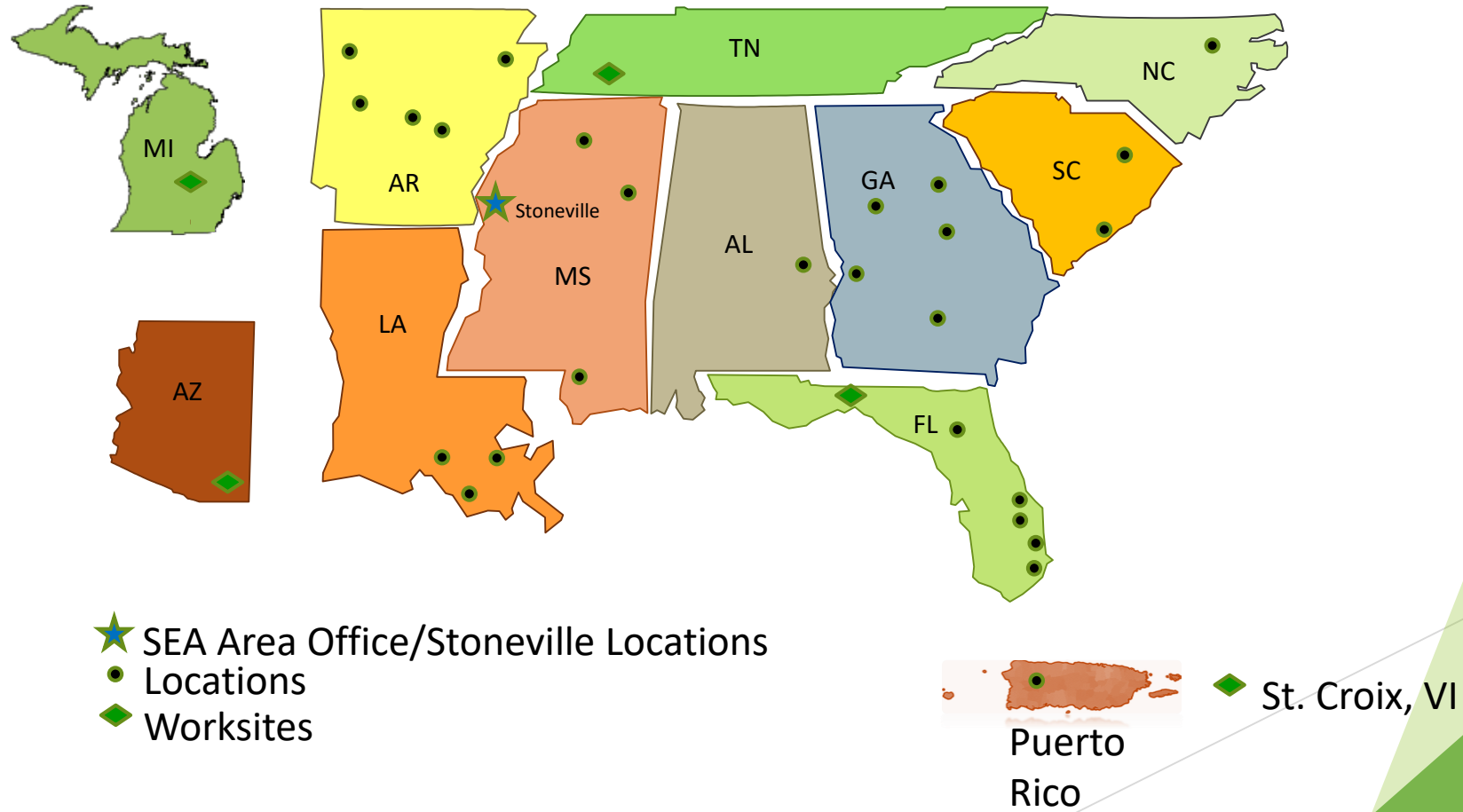


**Southeast Area Office Headquarters**

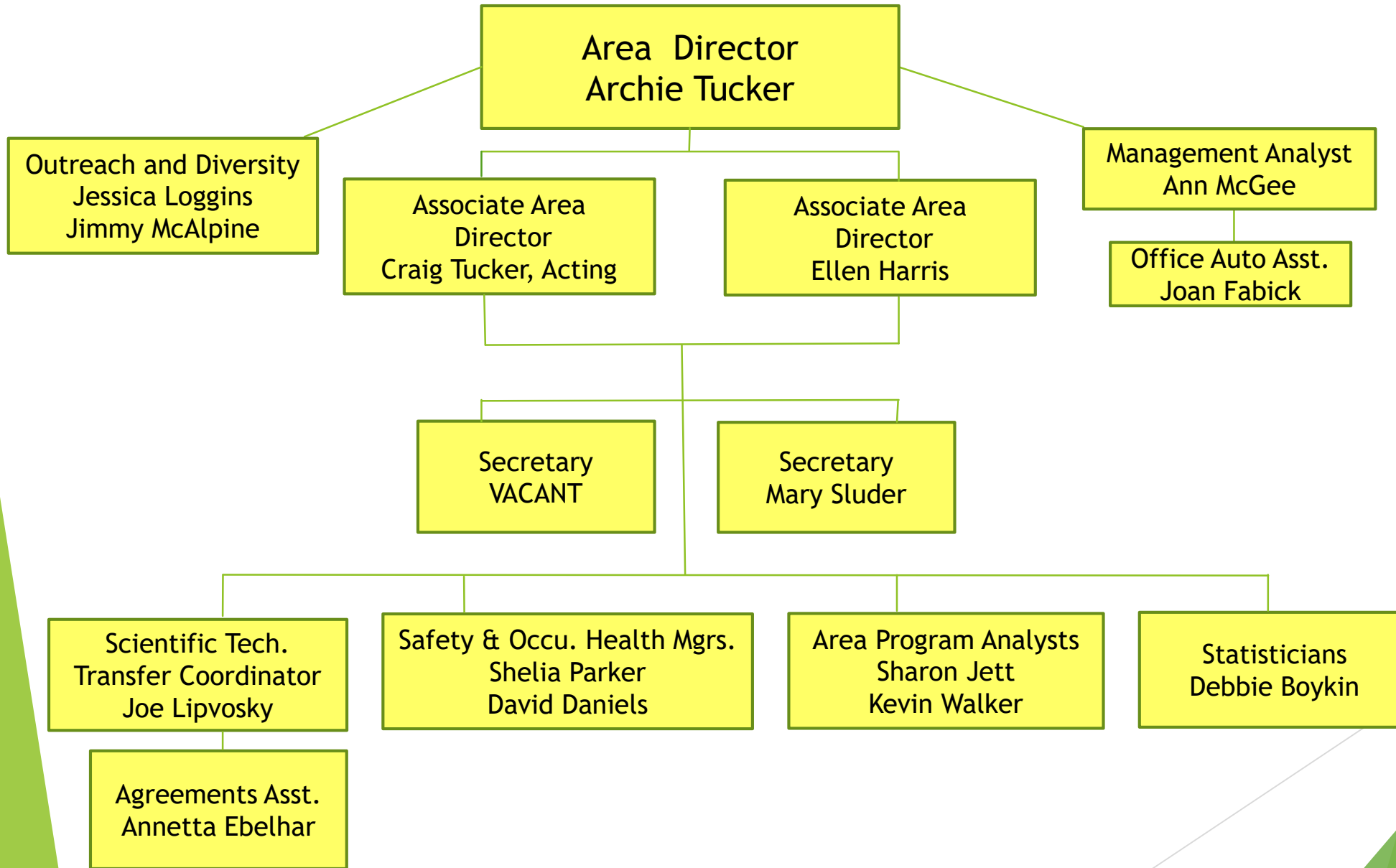
# ARS is Divided into 5 Areas



# Southeast Area



# Area Director's Office



# Functions of the Area Office

- Executive leadership of the Area's scientific program
- Management of personnel and infrastructure
- Operation planning, direction, and evaluation of research in the research management units
- Coordinate the Agency's research with other organizations

# SEA Mission

The Mission of the Southeast Area is to support and direct quality research programs that solve the problems of our customers and stakeholders in the most efficient and effective way possible. We do this by:

- Providing quality and safe research facilities; • Recruiting and employing the best scientific talent and support positions
- Embracing a culture of diversity and inclusiveness
- Monitoring the progress of funded research projects and making adjustments as needed to ensure successful outcomes
- Transferring research outcomes to end users utilizing a variety of methods to ensure research accomplishments are shared and available to the public



# Our scientific research solves problems that effect Americans daily

- **Ensure high-quality food**
- **Meet nutritional needs of U.S. consumer**
- **Sustain a viable food and agricultural economy**





# The Southeast Area

- 27 Locations and 5 worksites
- 63 Research Units
- Total Employees - 1,690
- More than 439 Research Scientists
- 143 Support Scientists
- 34 Post Doctoral Researchers
- \$**237.6** million - Total Budget
- \$**15.7** million - Soft Funds





## SEA Publications - CY 2017 (First Author and Co-Authored)

- **1,975 - Peer Review Journal Articles**
- **502 - Abstracts**
- **177 - Proceedings/Symposium**
- **95 - Book Chapter**
- **117 - Other publications**
- **2,866 - Total Publications**

# SEA Mentoring & Training

- 322 - Adjunct or Professor Appointments
- 175 - SY's serving as Student Advisors
- 54 - Pathways Students
  - ✓ 234 - Grad students working in our labs
  - ✓ 349 - Undergraduate students working in our labs



# Grantsmanship Activities

- **243 - Competitive Grant Proposals**
- **110 - Proposals Awarded**
- **85 - NIFA Proposals**
- **18 - NIFA Proposals Awarded**  
**\$5.5 million**

# SEA Technology Transfer FY 18

- CRADAs - 14 Amendments - 11
- MTRAs - 34 Amendments - 10
- MTAs - 157
- NDA - 26
- Invention Disclosures - 22
- Pending Patent Apps - 12
- Issued Patents - 2
- Total Pending Apps - 12
- Total Active Patents - 72
- License Applications - 3
- Executed Licenses - 4



## Facilities Co-Located with Universities

- Arkansas State University - Delta Water Management Research Unit, Jonesboro, AR
- University of Arkansas - Poultry Production and Products Safety Research Unit, Fayetteville, MS
- Auburn University - National Soil Dynamics Laboratory, Auburn, AL
- Mississippi State University - Corn Host Plant Resistance Research Unit, Starkville, MS
- Mississippi State University - Warmwater Aquaculture Research Unit, Stoneville, MS
- University of Mississippi - Natural Products Utilization Research Unit, Oxford, MS
- Clemson Pee Dee Station (Cotton Program) - Coastal Plain Soil, Water and Plant Conservation Research Unit, Florence, SC

## Facilities Co-Located with Universities

- North Carolina State University - Food Science Research Unit, Market Quality and Handling Research Unit, and Plant Science Research Unit, Raleigh, NC
- University of Tennessee - Crop Genetics Worksite, Jackson, TN
- University of Arizona - Food and Feed Safety Worksite,
  - Tucson, AZ
- University of Georgia -
  - Plant Genetic Resources Conservation Research Unit, Griffin, GA;
  - Southwest Watershed Research Unit, Crop Genetics and Breeding Research Unit, Tifton, GA
  - Crop Protection and Management Research Unit, Tifton, GA
- Florida A&M University - Insect Behavior and BioControl Research Unit, Gainesville, FL



# Universities Co-Located with our ARS Facilities

- U.S. Vegetable Laboratory,  
Charleston, SC - Clemson University
  
- Southern Horticultural Research,  
Poplarville, MS - Mississippi State  
University

# SEA Collaborations

with 1862 / 1890 Land Grant Institutions:

- **Alabama A&M University**
- **Auburn University**
- **Tuskegee University**
- **University of Arkansas**
- **University of Arkansas at Pine Bluff**
- **University of Florida**

- **Florida A&M University**
- **University of Georgia**
- **Fort Valley State University**
- **Kentucky State University**
- **Louisiana State University**
- **Southern University**

- **Mississippi State University**
- **Alcorn State University**
- **North Carolina State University**
- **Clemson University**
- **University of Tennessee**
- **Tennessee State University**
- **Texas A&M University**

# Collaborations on National Cotton Variety Test Program

- **Louisiana State University**
- **New Mexico State University**
- **University of Tennessee**
- **University of Arkansas**
- **University of Missouri**
- **Texas A&M University**

# Thank you!

