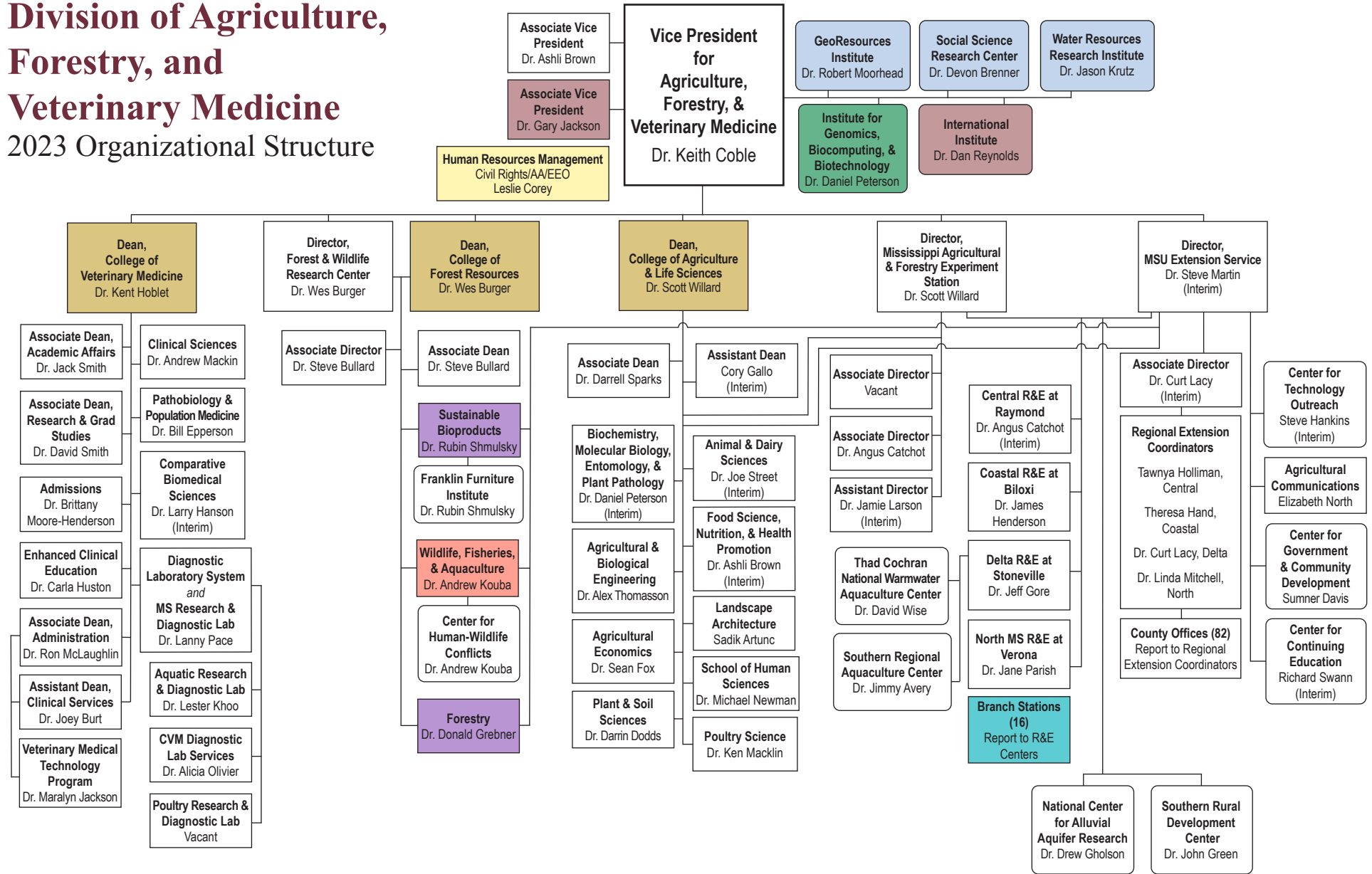


# Division of Agriculture, Forestry, and Veterinary Medicine

## 2023 Organizational Structure



- Centers and Institutes
- Reports jointly to the VP for Agriculture, Forestry, and Veterinary Medicine and the VP for Research and Economic Development
- Reports jointly to the VP for Agriculture, Forestry, and Veterinary Medicine, the VP for Research and Economic Development, and the Provost and Executive VP
- Reports jointly to the Dean of the College of Forest Resources and the FWRC and Extension Directors
- Branch stations report to R&E Center heads
- Chief Human Resources Officer has University responsibility for equal employment, affirmative action, and civil rights compliance
- Reports jointly to the VP for Agriculture, Forestry, and Veterinary Medicine, the Dean of the College of Veterinary Medicine, the Director of the Mississippi Agricultural and Forestry Experiment Station, and the VP for Research and Economic Development
- Reports jointly to the VP for Agriculture, Forestry, and Veterinary Medicine and the Provost and Executive VP
- Reports jointly to the Dean of the College of Forest Resources and the FWRC, Extension, and MAFES Directors