

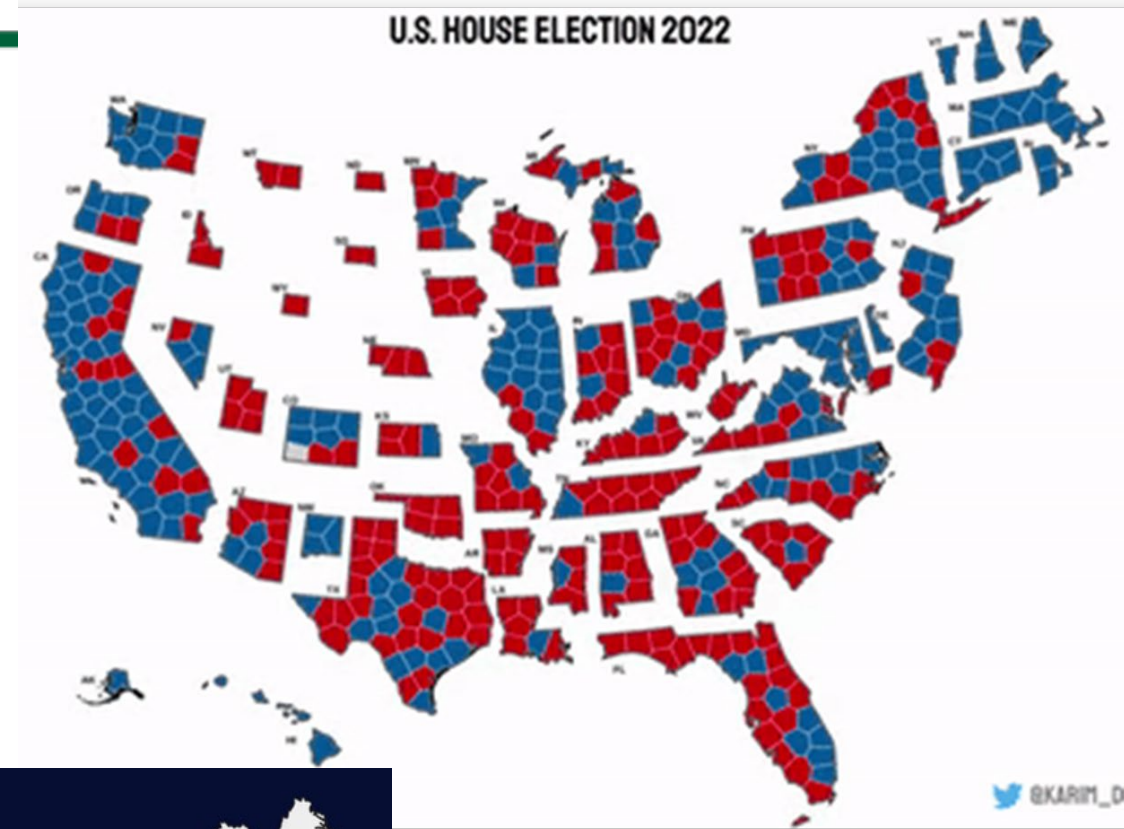
CARET-AHS Advocacy Update

**Caron Gala, Director of Governmental Affairs
and Executive Director of CARET**



AHS-CARET – Southern Region

- Alabama
- Arkansas
- Florida
- Kentucky
- Louisiana
- Mississippi
- North Carolina
- Oklahoma
- South Carolina
- Tennessee
- Texas
- Virginia





Appropriations

FY2024 Requests

- Capacity accounts
 - Hatch, Evans-Allen, McIntire Stennis, 1994 Research and Education
 - Smith Lever 3b&c, 1890s Extension, 1994 Extension
- Competitive accounts
 - Agriculture and Food Research Initiative
 - Research Facilities Act
 - WAMS

APLU Board on Agriculture Assembly Unified Fiscal Year 2024 Appropriations Request

USDA National Institute of Food and Agriculture (NIFA)



The Board on Agriculture Assembly (BAA) requests bold federal investment in our nation's colleges of agriculture and forestry by advancing funding increases for core accounts that underpin the strength of our nation's public research, Extension, and education system serving U.S. food and agriculture. The return on investment of U.S. agriculture research and Extension is \$20 for every public \$1 invested. Yet federal support for NIFA agricultural research, education, and Extension has been flat in real dollars, resulting in destabilization of the very system the U.S. relies on to cultivate U.S.-based agricultural leaders, reinforce domestic preparedness against pests and diseases, and ensure the U.S. leadership in global food security and technology.

The BAA requests investment that rebuilds U.S. preeminence across public university research, Cooperative Extension System, education programs, and research facilities.

RESEARCH PROGRAMS

- ▶ **Hatch Act:** Agricultural Experiment Stations located in every state provide research *capacity* for critical issues and innovations that affect agricultural production, profitability, and sustainability, such as climate resilience strategies, conservation, economic analysis, food safety, invasive species, biosecurity, and precision agriculture. Geographically relevant research occurs across national, regional, state, and local contexts. **FY2024 Request: \$300 million**
- ▶ **Evans-Allen:** Agricultural research at 1890s colleges of agriculture takes place due to Evans-Allen *capacity* funds that enable research for small farmer challenges, food security and nutrition, and workforce development. Most Black students majoring in agriculture graduate from 1890s institutions. **FY2024 Request: \$108 million**
- ▶ **1994 Institution Research Program:** The Tribal College Research Program supports research that protect reservation forests, woodlands, grasslands, and crops, as well monitor soil and water quality. **FY2024 Request: \$17.5 million**
- ▶ **McIntire-Stennis:** Forestry research *capacity* addresses development of biobased products, prevention of forest fires, identification of new energy sources, expansion of outdoor recreational activity, and mitigation techniques for invasive species. It is a direct source of funds for resource science graduates. **FY2024 Request: \$46 million**
- ▶ **Agriculture and Food Research Initiative (AFRI):** The flagship *competitive* grants program for federal priorities that improves rural economies, increases food production, stimulates the bioeconomy, mitigates the impacts of climate variability, addresses water availability issues, ensures food safety, enhances human nutrition, and trains the next generation of agricultural professionals. **FY2024 Request: \$500 million**

EXTENSION PROGRAMS

- ▶ **Smith-Lever Section 3(b) and (c):** *Capacity* for 1862 Extension that supports a network of land-grant-university-connected state, tribal, and local educators who deliver vital, timely, practical information to agricultural producers, small business owners, communities, youth, and families. **FY2024 Request: \$420 million**
- ▶ **Extension services at 1890 institutions:** *Capacity* that assists 1890s in working with diverse communities with research-based, non-formal education about market development, acquisition of capital and technology, estate planning, and profitability. Stakeholders include small to medium size farmers or other underserved populations. **FY2024 Request: \$88 million**
- ▶ **Tribal College Extension Grants Program (TCEP):** Enables 1994 institutions to deliver science-based, culturally relevant extension education programs to address biobased energy, production, and food safety needs, improving quality of life on reservations. **FY2024 Request: \$17.5 million**
- ▶ **Smith Lever 3(d) Programs:** Includes the following important programs—Expanded Food and Nutrition Education Program (EFNEP); Farm Safety and Youth Farm Safety Education; New Technologies for Agricultural Extension; Children, Youth, and Families at Risk; and Federally Recognized Tribes Extension Programs. **FY2024 Request: \$95 million**

Congress of the United States

Washington, DC 20515

March 24, 2023

The Honorable Kay Granger
Chairwoman
Committee on Appropriations
Washington, D.C. 20515

The Honorable Rosa DeLauro
Ranking Member
House Committee on Appropriations
Washington, D.C. 2051

The Honorable Andy Harris
Chairman
House Appropriations Subcommittee on Agriculture,
Rural Development,
Food and Drug Administration and Related Agencies
Washington, D.C. 20515

The Honorable Sanford Bishop Jr.
Ranking Member
House Appropriations Subcommittee on Agriculture,
Rural Development,
Food and Drug Administration and Related Agencies
Washington, D.C. 20515

Dear Chairwoman Granger, Chairman Harris, Ranking Member DeLauro and Ranking Member Bishop:

Thank you for supporting agricultural research, education, and extension. As you consider funding for fiscal year (FY) 2024, **we urge you to prioritize an investment of \$500 million for agricultural research infrastructure as authorized through the Research Facilities Act (RFA) in Section 7503 of the Agricultural Improvement Act of 2018 (P.L. 115-334).**

Agriculture is facing unprecedented challenges: extreme droughts and floods, increased pest and disease pressures, and feeding a growing population with less working land are all challenges that must be urgently addressed. The United States Department of Agriculture's National Institute of Food and Agriculture (NIFA) is well positioned to work in tandem with land-grant universities, non-land-grant colleges of agriculture, and cooperative extension to provide students, farmers, and local communities with real world solutions to these challenges.

To meet these challenges, however, the United States (U.S.) must invest in research facilities at agricultural experiment stations and laboratories within public colleges of agriculture to foster investigative environments that support cutting-edge science solutions. A 2020 study¹ found 69% of buildings at land-grant universities and non-land grant colleges of agriculture are at the end of their useful lives with the cost of upgrading deferred maintenance at \$11.5 billion. A more recent study found that these schools will require an annual investment of over \$500 million to keep deferred maintenance needs from growing.² Without specific investment in research facilities – many of which are located at research facilities from the 1950s and 1960s, the U.S. will not keep pace with international competitors or recruit the next generation of researchers.

Within NIFA, the RFA funding will support competitive grants to land-grant universities and non-land-grant colleges of agriculture for facility construction, alteration, acquisition, modernization, renovation, or remodeling. Traditionally, for every \$1 publicly invested in the U.S. agricultural research and extension system, \$17 in benefits is returned. This investment will prioritize the research capability for advancing agricultural production, profitability, and sustainability.

We urge strong support for the RFA to maintain the return on investment, reassert and ensure U.S. leadership in agricultural research, and advance the U.S. agricultural sector.

Sincerely,

House Dear Colleague (RFA)

- Bipartisan, led by Rep. Schrier (D-WA 8th District) and Mann (R-KS 1st District)
- 56 signatures (9 Rs/47 Ds)
- Requests \$500m in support for RFA

March 24, 2023

Debt-Limit Agreement – June 3

Fiscal Responsibility Act

Suspends the limit on federal debt through January 1, 2025, and makes several changes that affect federal spending and revenues.

- **Imposes caps** on most discretionary funding (that is, funding that is subject to the appropriation process) for FY 2024 and FY 2025.
- Rescinds certain unobligated funds provided in response to the coronavirus pandemic.
- Modifies work requirements for recipients of Supplemental Nutrition Assistance Program benefits and Temporary Assistance for Needy Families.

\$1.5 trillion reduction in projected deficits estimated to result from the FRA over the next 10 years (CBO)

TABLE 1

Discretionary Levels in the Debt-Limit Agreement (\$ in billions)

	2023	2024	Difference
Defense Discretionary – base/cap*	858.4	886.3	28.0
Non-Defense Discretionary (NDD):	771.4	772.7	1.3
NDD base/cap*	743.9	703.7	-40.2
Agreed-upon adjustments:			
CHIMPs**	15.0	25.0	10.0
Emergencies***	12.5	23.0	10.5
Rescissions: Commerce fund, IRS****		21.0	21.0
Components of NDD:			
Veterans' medical care	118.8	121.0	2.3
NDD outside veterans' medical care	652.6	651.6	-1.0

Source: CBPP analysis of Congressional Budget Office data

*The statutory cap level for 2024 specified in the Fiscal Responsibility Act, and the comparable level for 2023 at the time of the enactment of the bill.

**CHIMPs stand for "Changes In Mandatory Programs" made in annual appropriations bills. The table reflects additional NDD funding offset by CHIMP savings.

***Funding that is designated as an emergency is not subject to the caps.

****Rescissions are provisions that repeal funding, enacted in prior years, that has not yet been used by government agencies. The table reflects additional NDD funding offset by rescissions.

	FY2023	FY2024 APLU Request*	FY2024 House Action	FY2024 Senate Action
NIFA, <i>Hatch Act</i> (State Agricultural Experiment Stations)	265	300	265	265
NIFA, <i>Smith-Lever Section 3(b) and (c)</i> (Extension Capacity)	325	420	325	325
NIFA, <i>Smith-Lever Section 3(d)</i>	91.25	95	87.7	91.25
NIFA, <i>Evans-Allen Program</i> (1890s Research and Education)	89	108	89	89
NIFA, <i>1890 Institutions Extension Services</i>	72	88	72	72
NIFA, <i>McIntire-Stennis Cooperative Forestry</i>	38	46	38	38
NIFA, <i>Research Grants for 1994 Institutions</i>	5	17.5	5	5
NIFA, <i>Extension Services at 1994 Institutions</i>	11	17.5	11	11
NIFA, <i>Payments Funding for 1994 Institutions</i>	7	17.5	7	7
NIFA, <i>Agriculture and Food Research Initiative (AFRI)</i>	455	500	460	455
NIFA, <i>International Agriculture Programs, Partnerships to Build Capacity in International Agriculture</i> ⁱ	-	10	-	-
NIFA, <i>International Agriculture Programs, International Agricultural Science and Education Competitive Grants</i> ⁱ	-	5	-	-
NIFA, <i>Women and Minorities in STEM</i>	2	10	2	2
NIFA, <i>Research Facilities Act</i>	2	500	-	-

FY2024 Approps

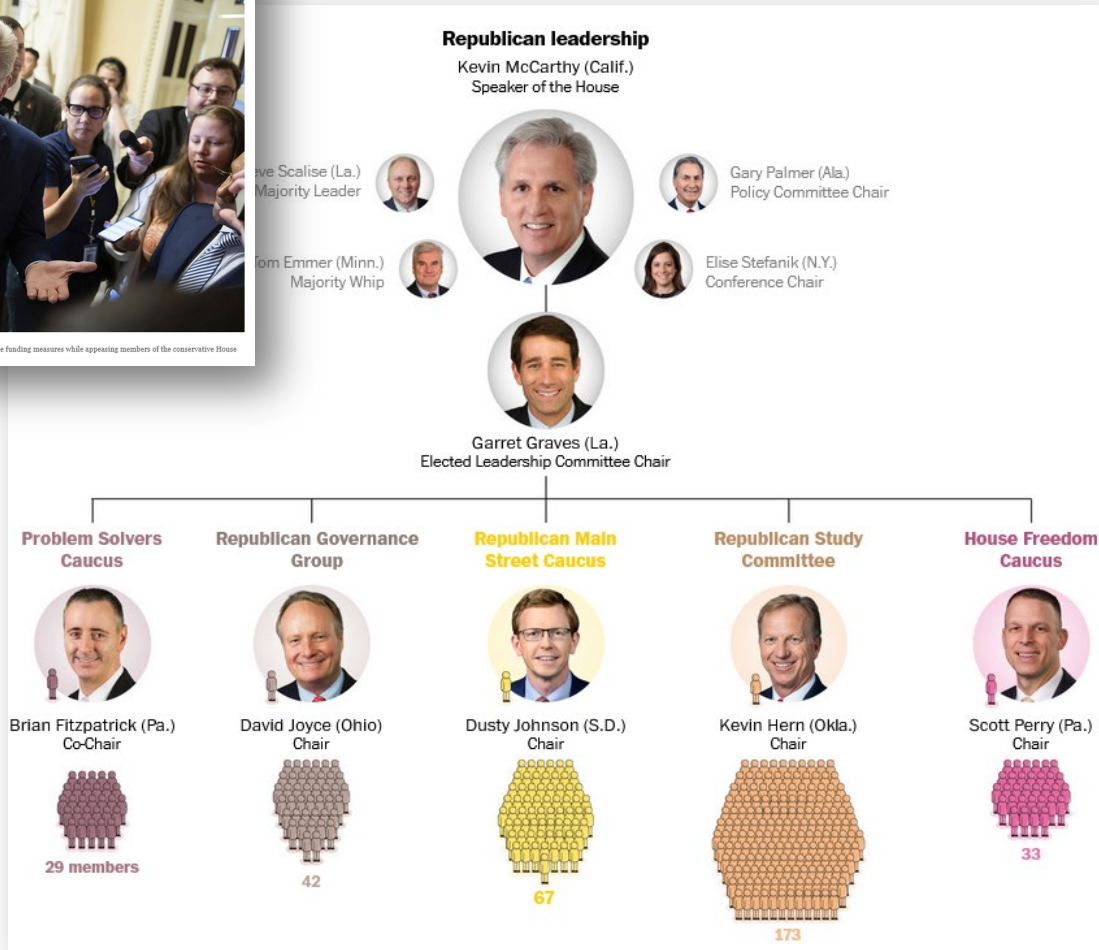
House GOP bails on funding fight amid conservative impasse

Republican leaders punted their agriculture and FDA spending bill until September — a setback for their hopes of unity.

BY MEREDITH LEE HILL | 07/27/2023 12:29 PM EDT | UPDATED 07/27/2023 02:31 PM EDT



Speaker Kevin McCarthy's team was still scuffling Thursday to whip support for the funding measures while appeasing members of the conservative House Freedom Caucus. | Francis Chang/POLITICO



AMENDMENT TO H.R. 4368, AS REPORTED OFFERED BY MS. SCHRIER OF WASHINGTON

At the end of the bill (before the short title), insert the following:

1 SEC. _____. For “Agricultural Programs–Research,
2 Education, and Economics–National Institute of Food and
3 Agriculture–Research and Education Activities” for the
4 establishment of a program to make competitive grants
5 to assist in the facility construction, alteration, acquisi-
6 tion, modernization, renovation, or remodeling of agricul-
7 tural research facilities, as authorized by the Research Fa-
8 cilities Act (7 U.S.C. 390 et seq.), there is hereby appro-
9 priated, and the amount otherwise provided by this Act
10 for “Agricultural Programs–Processing, Research, and
11 Marketing–Office of the Secretary” is hereby reduced by,
12 \$2,000,000.

Farm Bill

BAA Farm Bill Broad Recommendations



2023 FARM BILL TITLE VII POLICY RECOMMENDATIONS



ASSOCIATION OF
PUBLIC
LAND-GRANT
UNIVERSITIES



APLU
BOARD ON
AGRICULTURE
ASSEMBLY

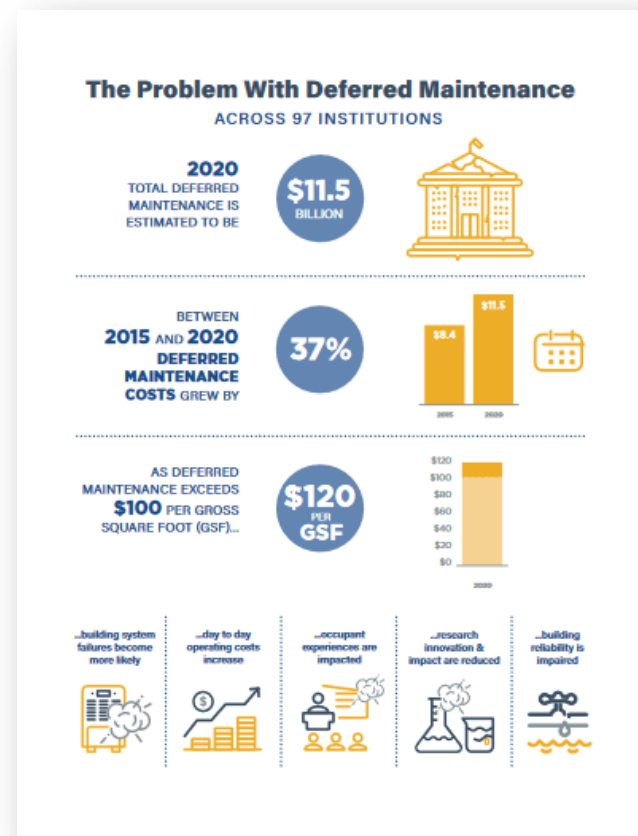
- Hatch language update to include Experiment Station Directors as recipients of funding.
- Reauthorization of 1890s and 1994 authorities with changes to percentage of 1862 funding/facilities capabilities.
- New investigators 12 yrs. after graduating, medical leave possible.
- Eliminate the SCRI match.
- Increase discretionary authority for Smith Lever 3(d) which is a competitive Extension authority for climate change, workforce development, and decision-making support.
- Reauthorization of distance education programs.
- Combination of the authorities of international agricultural partnership and grants.
- Reauthorization of RFA



Farm Bill Request

- Research Facilities Act
 - Competitive Account
 - \$5 Billion mandatory funding request
 - Historic, never requested mandatory
 - Justified by
 - \$11.5 Billion in deferred maintenance
 - \$38 billion in replacement value

Materials are on:
www.land-grant.org



March 2021

A National Study of Capital Infrastructure at Colleges and Schools of Agriculture

AUTHORED BY:
 Peter Reeves, Director, Product Management - Data
 Sophie Mason, Senior Account Manager
 Luke Sanders, Data Analyst

PRODUCED BY
GORDIAN®

APLU Board on Agriculture Assembly 2023 Farm Bill Request

REQUEST: APLU requests reauthorization and \$5 billion in mandatory funding for the Research Facilities Act in the 2023 Farm Bill.

Our public colleges of agriculture, including the historic land-grant university (LGU) system, serve the nation by fostering excellence in research innovation while providing avenues to train future global leaders in agriculture and food systems. Public research accelerates technology adoption, growth of the agricultural and food marketplace, entrepreneurship, and public-private partnerships, returning \$20 to the economy for every dollar spent.

However, this system faces unprecedented infrastructure challenges. U.S. researchers and educators are being asked to perform 21st century science in facilities constructed in the 1950s and 1960s.

69% More than 69% of research and education facilities at LGU colleges of agriculture are at the end of their life cycles.

Schools of Agriculture Age Category Distribution Comparison

Renovation Age	2015	2020
Under 10	14%	23%
10-20 Years Old	23%	24%
25-50 Years Old	34%	22%
50+ Years	29%	37%

THE PROBLEM
 Failing infrastructure at U.S. Colleges of Agriculture

Modern agricultural research and education facilities serve as the backbone of cutting-edge research and applied science solutions that address climate change, agricultural profitability, food safety, zoonotic disease preparedness, personalized nutrition, biosecurity, new bio-based packaging and energy innovations, and advanced market analysis. Gordian, a firm with more than 30 yrs. of experience analyzing cost data and planning services for buildings, evaluated current facilities at U.S. schools of agriculture for research, teaching, and Extension. In 2020, Gordian assessed the state of facilities at the colleges or schools of agriculture, reporting that 69% of the buildings are at the end of their useful life. Gordian reports that the cost of upgrading deferred maintenance in 2021 is \$11.5 billion, with a replacement value of \$38.1 billion.

SOLUTION \$5 billion in mandatory funding for the Research Facilities Act over the lifetime of the next Farm Bill.

Titles

- Title I, Commodity Programs: Provides support for major commodity crops, including wheat, corn, soybeans,

NEWS > BUSINESS NEWS

After a review, Senate ag leaders say more farm bill funding is needed

The 2023 farm bill is expected to be the most expensive ever but Congress will need additional funding to strengthen the farm and food safety nets, say Senate Ag Committee leaders.

By [Chuck Abbott](#) | Published on April 11, 2023



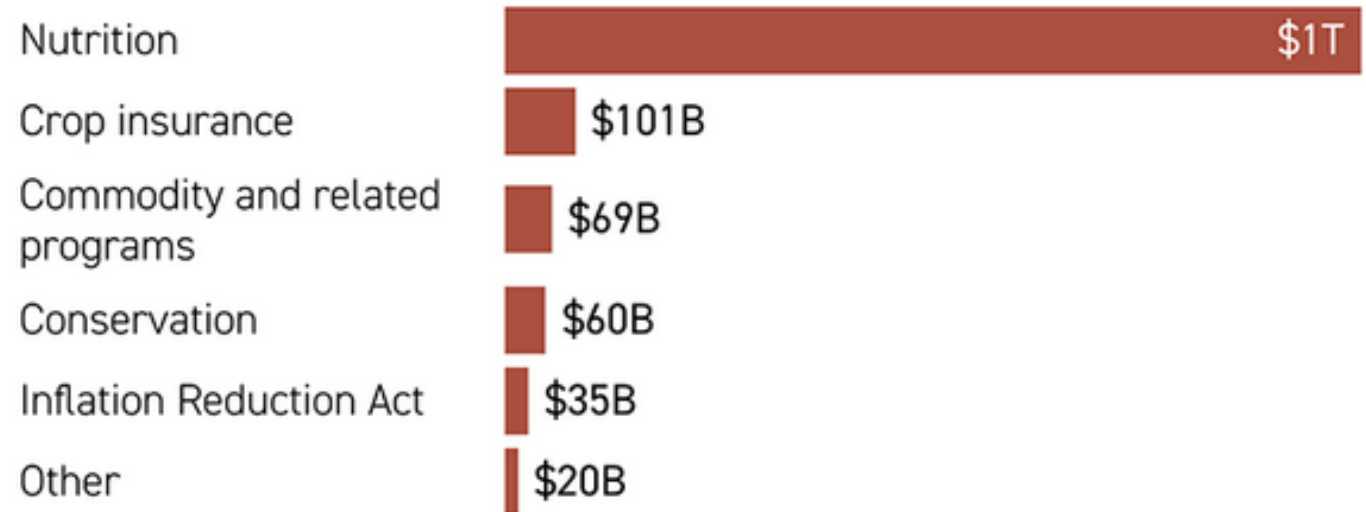
- Title X, Horticulture: Supports the production of specialty crops, USDA-certified organic foods, and locally produced foods and authorizes establishing a regulatory framework for the cultivation of industrial hemp.
- Title XI, Crop Insurance: Enhances risk management through the permanently authorized federal crop insurance program.
- Title XII, Miscellaneous: Covers other programs and assistance, including livestock and poultry production and support for beginning farmers and ranchers.

May, 2023

The Congressional Budget Office's most recent cost estimate for this year's farm bill put it north of \$1.5 trillion, if supplemental funding from the Inflation Reduction Act is included.

Farm bill nutrition provision tops \$1.2T in CBO's May baseline

Ten-year baseline projection, fiscal 2024-2033, under current law



CBO baseline as of May 2023

Source: CBO

Taylor Miller Thomas, POLITICO Data & Graphics

“\$0 Farm Bill”, Estimates Slowed

- CBO Budget Analysis Division is understaffed, delaying scores used to estimate the budgetary effects of policy changes.
- Stabenow and Boozman have not yet started conversations around nutrition and conservation titles.
- The intense focus on limiting mandatory funding, without information about scoring is putting pressure on conversations.
- Members: “Uncertain if IRA funds will be built into baseline.”

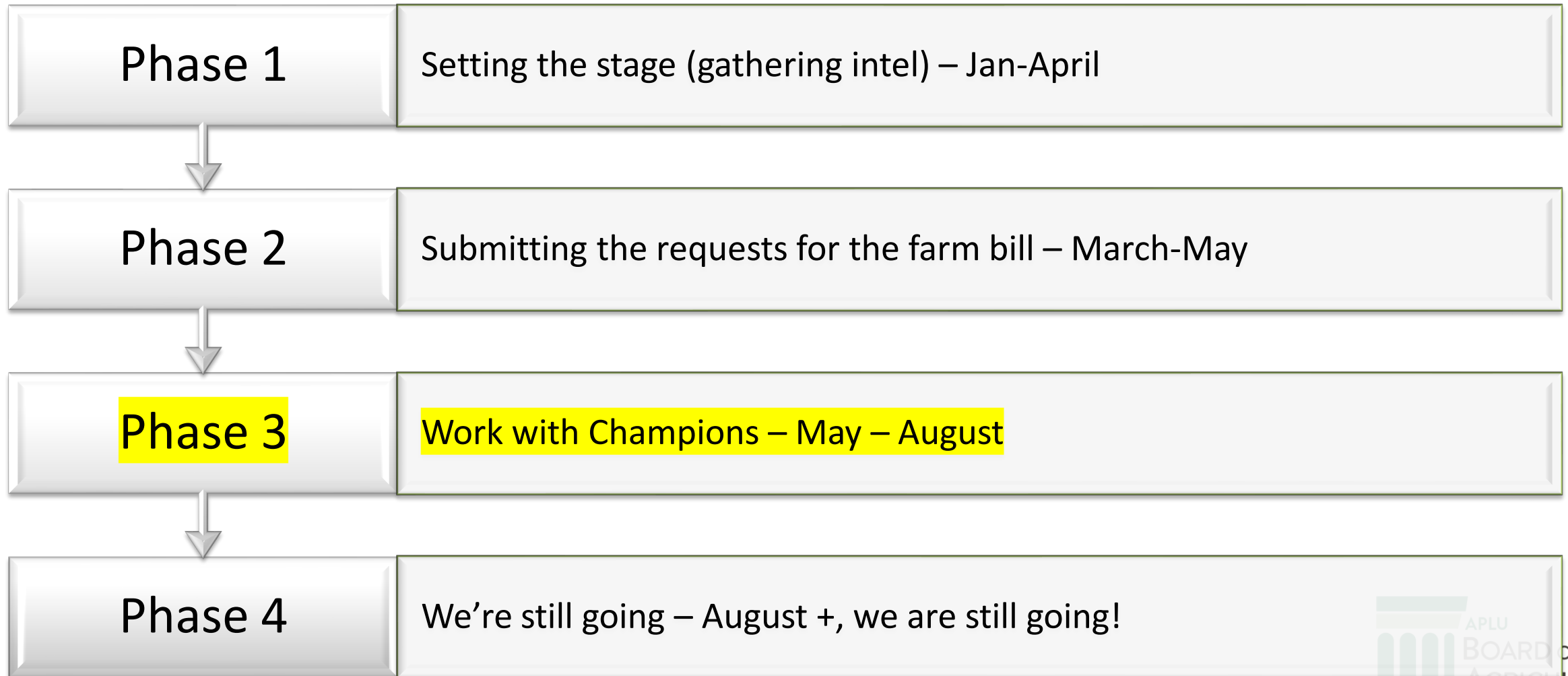
CONGRESS

Senate Agriculture leaders differ on shifting funds to farm bill

Republicans see chance to rescind money appropriated in 2022



Farm Bill Advocacy Phases



Marker Bill – H.R. 4135

The bill includes:

- \$1 B in mandatory funding for the Research Facilities Act (RFA) over the lifetime of the next Farm Bill and
- Reauthorizes discretionary appropriations for the RFA, capping funding at \$1 B per fiscal year (over five years).
- \$1 B in mandatory funding for ARS facilities.

Allows waiver of matching requirement, includes geographic and diversity requirements.

Need Republican cosponsors.



Marker Bill – Senate (D only)

- Hirono (D HI) - lead
- Durbin (D IL) – Senate Leadership/Ag. Committee
- Klobuchar (D MN) – Ag. Committee
- Smith (D MN) – Ag. Committee
- Lujan (D NM) – Ag. Committee
- Fetterman (D PA) – Ag. Committee
- Welch (D VT) – Ag. Committee
- Wyden (D OR) – Finance Committee Chair
- Van Hollen (D MD)
- Merkley (D OR)
- King (I ME)

Bill includes:

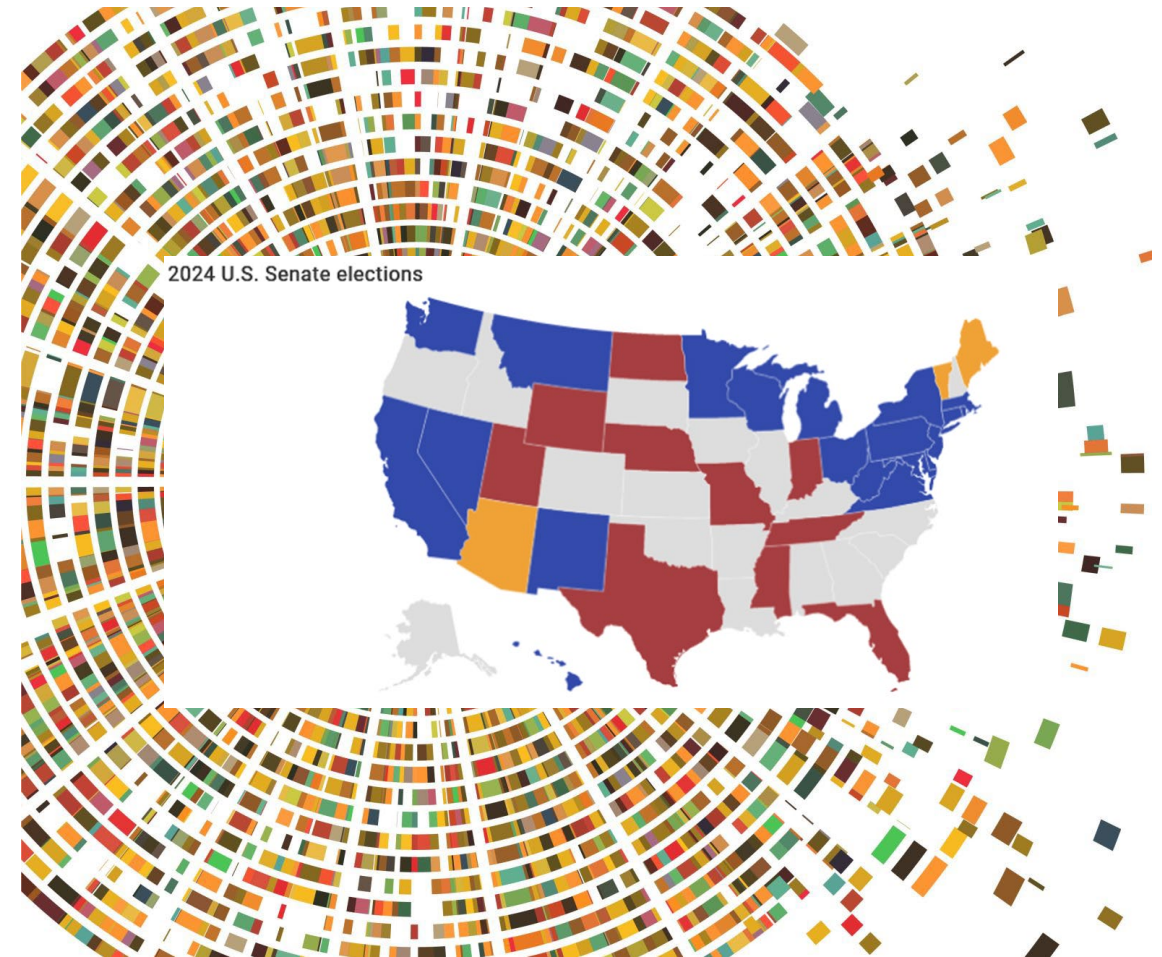
- \$5 B in mandatory funding for the Research Facilities Act (RFA) over the lifetime of the next Farm Bill and
- Reauthorizes discretionary appropriations for the RFA, capping funding at \$3 B per fiscal year (over five years).
- \$1 B in mandatory funding for ARS facilities.

Allows waiver of matching requirement, includes geographic and diversity requirements.

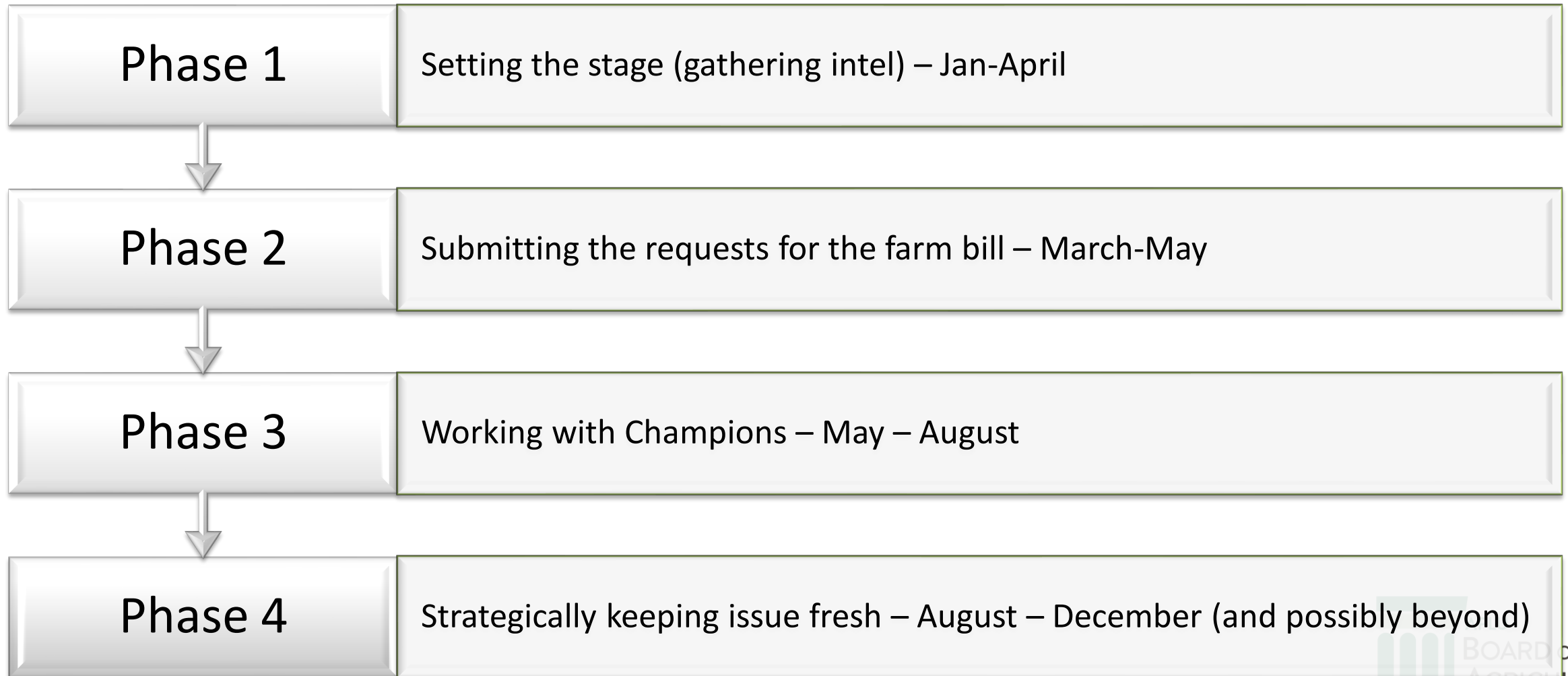
Going into 2024 Elections

2023-2024

- 2024 Election – House
 - All 435 seats will be up for election.
- 2024 Election – Senate
 - 33 of the 100 seats are up for regular election.
 - 10 seats are held by Republicans, 20 seats are held by Democrats and three seats are held by independents who caucus with Democrats.
 - The chart on the left shows the states in-cycle only; not retirements.



Farm Bill Advocacy



2024 Materials that Inform

- What materials do we need for 2024?
 - Summary of colleges of ag and primary outcomes?
 - Better description and data about capacity and competitive impacts/outcomes?

**APLU Board on Agriculture Assembly
Unified Fiscal Year 2024 Appropriations Request**

USDA National Institute of Food and Agriculture (NIFA)



RESEARCH PROGRAMS

- ▶ **Hatch Act:** Agricultural Experiment Stations located in every state provide research **capacity** for critical issues and innovations that affect agricultural production, profitability, and sustainability, such as climate resilience strategies, conservation, economic analysis, food safety, invasive species, biosecurity, and precision agriculture. Geographically relevant research occurs across national, regional, state, and local contexts. **FY2024 Request: \$300 million**
- ▶ **Evans-Allen:** Agricultural research at 1890s colleges of agriculture takes place due to Evans-Allen **capacity** funds that enable research for small farmer challenges, food security and nutrition, and workforce development. Most Black students majoring in agriculture graduate from 1890s institutions. **FY2024 Request: \$108 million**
- ▶ **1994 Institution Research Program:** The Tribal College Research Program supports research that protect reservation forests, woodlands, grasslands, and crops, as well as monitor soil and water quality. **FY2024 Request: \$17.5 million**
- ▶ **McIntire-Stennis:** Forestry research **capacity** addresses development of bio-based products, prevention of forest fires, identification of new energy sources, expansion of outdoor recreational activity, and mitigation techniques for invasive species. It is a direct source of funds for resource science graduates. **FY2024 Request: \$46 million**
- ▶ **Agriculture and Food Research Initiative (AFRI):** The flagship **competitive** grants program for federal priorities that improves rural economies, increase food production, stimulates the bioeconomy, mitigates the impacts of climate variability, addresses water availability issues, ensures food safety, enhances human nutrition, and trains the next generation of agricultural professionals. **FY2024 Request: \$500 million**

EXTENSION PROGRAMS

- ▶ **Smith-Lever Section 3(b) and (c):** **Capacity** for 1862 Extension that supports a network of land grant-university connected state, tribal, and local educators who deliver vital, timely, practical information to agricultural producers, small business owners, communities, youth, and families. **FY2024 Request: \$420 million**
- ▶ **Extension services at 1890 institutions:** **Capacity** that assists 1890s in working with diverse communities with research-based, non-formal education about market development, acquisition of capital and technology, estate planning, and profitability. Stakeholders include small to medium size farmers or other underserved populations. **FY2024 Request: \$88 million**
- ▶ **Tribal College Extension Grants Program (TCEP):** Enables 1994 institutions to deliver science-based, culturally relevant extension education programs to address bio-based energy, production, and food safety needs, improving quality of life on reservations. **FY2024 Request: \$17.5 million**
- ▶ **Smith-Lever 3(d) Programs:** Includes the following important programs—Expanded Food and Nutrition Education Program (EFNEP); Farm Safety and Youth Farm Safety Education; New Technologies for Agricultural Extension; Children, Youth, and Families at Risk; and Federally Recognized Tribes Extension Programs. **FY2024 Request: \$95 million**

The BAA requests investment that rebuilds U.S. preeminence across public university research, Cooperative Extension System, education programs, and research facilities.



	FY 2024	FY 2023	% Increase Over FY2023
50,000	\$500,000	\$300,000	133%
80,000	\$108,000	\$108,000	27%
50,000	\$17,500	\$17,500	250%
80,000	\$46,000	\$46,000	27%
50,000	\$500,000	\$500,000	100%
20,000	\$420,000	\$420,000	29%
72,000	\$88,000	\$88,000	22%
10,000	\$17,500	\$17,500	59%
80,250	\$95,000	\$95,000	4%

	FY 2024	FY 2023	% Increase Over FY2023		
EDUCATION					
Women and Minorities in STEM (WMAIS)	7 U.S.C. 5825	\$1,000	\$2,000	\$10,000	500%
Payments to the 1994 Institutions	7 U.S.C. 301 note	\$5,500	\$7,000	\$72,000	150%
INFRASTRUCTURE					
Research Facilities Act	7 U.S.C. 190	\$-	\$2,000	\$500,000	249%
GLOBAL AGRICULTURE RESEARCH AND EXTENSION					
Partnerships for Capacity	7 U.S.C. 1292	\$-	\$-	\$10,000	N/A
International Agricultural Competitive Grants	7 U.S.C. 1292b	\$-	\$-	\$5,000	N/A

Doug Steele
Association of Public and Land-grant Universities
dsteele@aplpu.org

Caron Gals
Association of Public and Land-grant Universities
cgals@aplpu.org

Bridget Krieger
Lewes-Burke Associates LLC
bridget@lewis-burke.com

CARET-AHS Chair Meetings with Stakeholder Groups



- American Farm Bureau Federation
- National Association of State Departments of Agriculture
- Farm Credit Council
- International Fresh Produce Association
- American Millers Association
- National Cattlemen Beef Association

External Stakeholders

Many Signed on to the Letter



HOME > NEWS > APLU, 340 AGRICULTURE GROUPS URGE CONGRESS TO FUND RESEARCH FACILITIES ACT IN 2023 FARM BILL

APLU, 340 Agriculture Groups Urge Congress to Fund Research Facilities Act in 2023 Farm Bill

APRIL 24, 2023

Washington, DC – The Association of Public and Land-grant Universities (APLU) and 340 national, regional, and state agriculture, food, and forestry stakeholder groups today sent a [letter](#) to congressional leadership urging House and Senate agriculture committee leaders to fund the Research Facilities Act in 2023 Farm Bill.

A 2021 [report](#) by Gordian assessed the state of facilities at U.S. colleges and schools of agriculture and reported that 70 percent of these buildings are at the end of their useful life. The report estimated the cost to upgrade deferred maintenance at \$11.5 billion, and the cost to replace the dilapidated facilities at \$38.1 billion. It further stated that strategic federal investment in these facilities at 1862, 1890, 1994, insular land-grant and non-land-grant schools of agriculture would create 200,000 new jobs nationwide. This investment would also contribute to the critical need for the U.S. to recruit and graduate 60,000 new U.S. students with agricultural expertise every year.

“The United States has long been recognized as having the world’s most innovative and productive agricultural sector, but a massive deferred maintenance backlog and crumbling research infrastructure threatens our ability to innovate and lead at a time of heightened global competition,” said APLU President Mark Becker. “We must invest in research infrastructure that will empower American farmers to address a growing array of crop and livestock diseases, promote soil health and quality, and strengthen the independence of U.S. food supply.”

Who Should We Meet With in the Fall?

- Agricultural Retailers Association
- American Farm Bureau Federation
- Brewers Association
- Crop Science Society of America
- National Association of State Departments of Agriculture
- National Association of Wheat Growers
- National Cattlemen's Beef Association
- National Farmers Union
- National Milk Producers Federation
- National Sustainable Agriculture Coalition
- USA Rice

CARET Executive Committee



Summary of EC Activities

Executive Committee (EC) Meeting:

- ✓ Rules of Operation
- ✓ Strategic Plan Implementation Committee
- ✓ Joint Planning Committee Update
- ✓ Regional Governance Advice from National CARET (Ongoing discussion)
- ✓ Liaison Responsibilities and Travel Update

Rules of Operation

Summary of Changes to the CARET National Rules of Operation:

1. Inclusion of terms for Executive Officers and assumed succession.
2. Number of Executive Committee Members.
3. Role of Executive Officers.
4. Role of Executive Committee in conducting business aligned with Rules.
5. Joint Planning Committee leadership and membership.
6. Updated list of Liaison organizations.
7. Guidance for regional caucuses. (Work-in-progress.)
8. Interaction and engagement with AHS Chair and Executive Committee.

CARET Strategic Plan - Initiatives

1. **Coalition-building:** Build relationships and understanding within the LGU system and with external stakeholders.
2. **Communication:** Increase and improve communication and coordination.
3. **Training:** Develop, train, and support the general membership of CARET and the AHS.
4. **Accountability:** Ensure that CARET is engaged and accountable.



Focus of CARET Executive Team - 2023-2024 Actions

- Support function of “influencer teams” (CARET/CGA/AHS)
 - Robust “Calls to Action” (CTA)
 - Timely materials
 - Talking points with clear arguments and justifications
 - Champion-building
- Keep website current
 - Meetings information
 - Advocacy information
 - Delegate/AHS member-only section
- Develop strategic coalition partnerships with outside groups
 - NASDA, AFBF, others
 - Coordinate advocacy
- Update Liaison Materials and Support Liaison Engagement
 - Travel
 - Summary of CARET/Hand-out about CARET
 - Talking points/engagement goals
- Support/engagement in regional meetings
 - Working with Doug Steele and Scott Angle (Chair of AHS) about this topic
 - Working with Regional Directors/Regional AHS and three topics: 1) AHS-CARET Partnership, 2) Training, and 3) Recruitment/Retention
- Enhancement of Mentor Program for CARET delegates
 - Matching up new CARET with mentors
 - Providing guidance
- Strategic Plan Implementation Committee
 - CARET/Dean “team evaluation”

When: CARET/AHS Meeting – February 25th - 28th 2024

Where: Omni Shoreham Hotel, Washington DC

- Sunday, CARET/AHS Exec and Business Meetings, CARET/AHS Regional Meetings, and Tailgate
- Monday, Panels on Themes and Hearing from Leaders/Coalition Supporters
- Tuesday, Hill Visits and Hill Reception/Champion Award
- Wednesday, Hill Visits and Travel Home

Save the date!