

Southern AHS/CARET Joint Summer Meeting

Knoxville, TN

July 29-30th, 2023



TENNESSEE
STATE UNIVERSITY
COLLEGE OF AGRICULTURE

College of Agriculture

The College of Agriculture



ESSEE
UNIVERSITY
AGRICULTURE

Challenges of our Time

Climate Change

Challenges of our Time

Burgeoning World Population

Challenges of our Time

Worldwide people engaged in agriculture dropped from 44% in 1991 to 26% in 2020

US people engaged in agriculture dropped from 2.2 million in 2007 to 2.01 million in 2021 which is about 1.3% labor force

Strategic Plans

Workforce Development

Global Food SECURITY

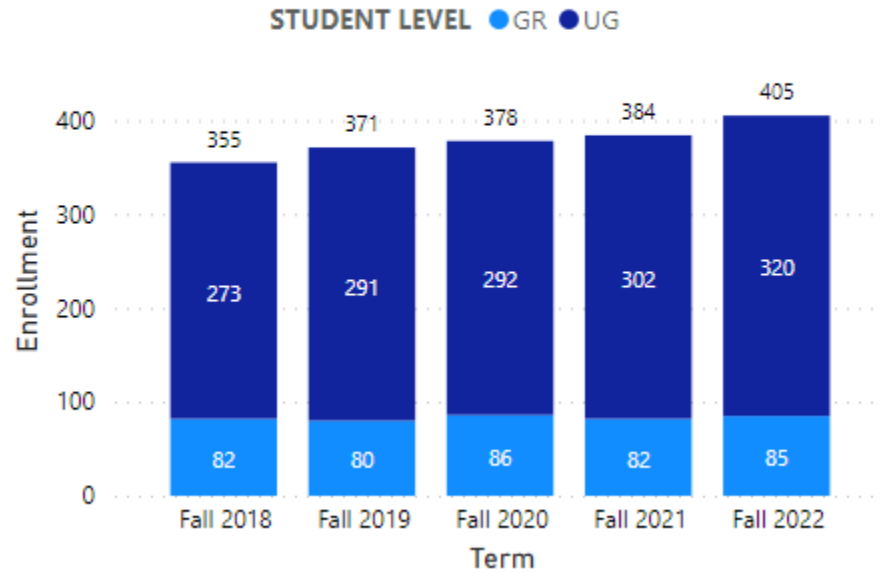
Climate CHANGE Impact Mitigation

Nutritional SECURITY

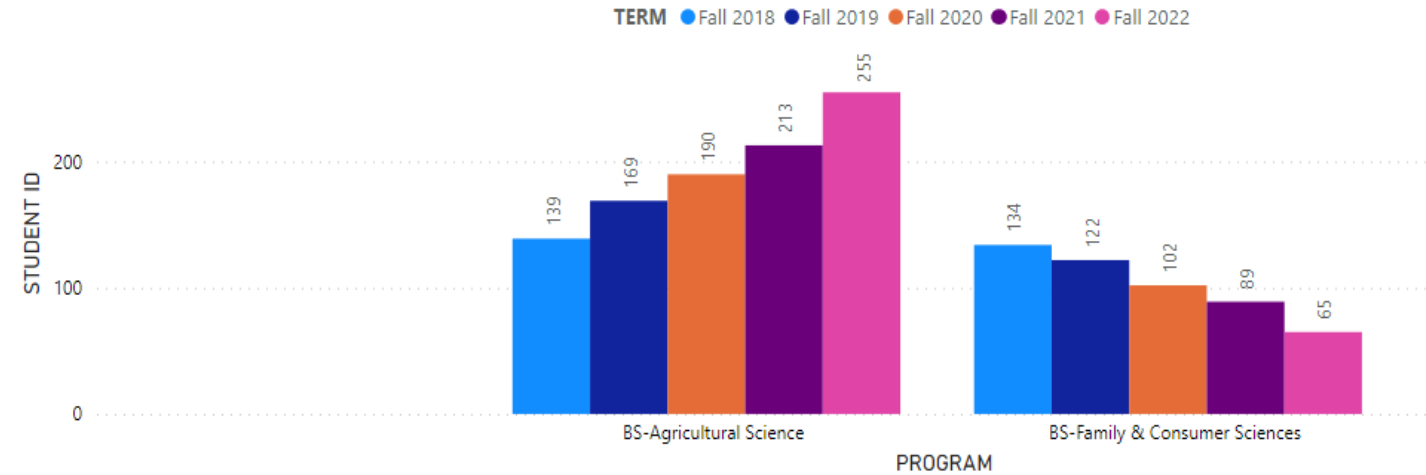
Academic Program

Academic Update: Enrollment

Enrollment by Term and Student Level



Enrollment by Program



Academic Update

New Program

- Fall 2022, PhD in Agricultural Sciences – Cohort 1 (13 students)
- Fall 2023, M.S. in Agribusiness and Leadership

Research Program

Overview

We employ 35 research faculty who are fully integrated into our two academic departments, the Department of Agricultural and Environmental Sciences and the Department of Human Sciences.

Research is conducted in the 34 state-of-the-art research laboratories located on the Main Campus and on three Agricultural Research and Education Centers. Centers are located on the main campus of TSU, Ashland City, TN and the Nursery Research Center in McMinnville, TN.

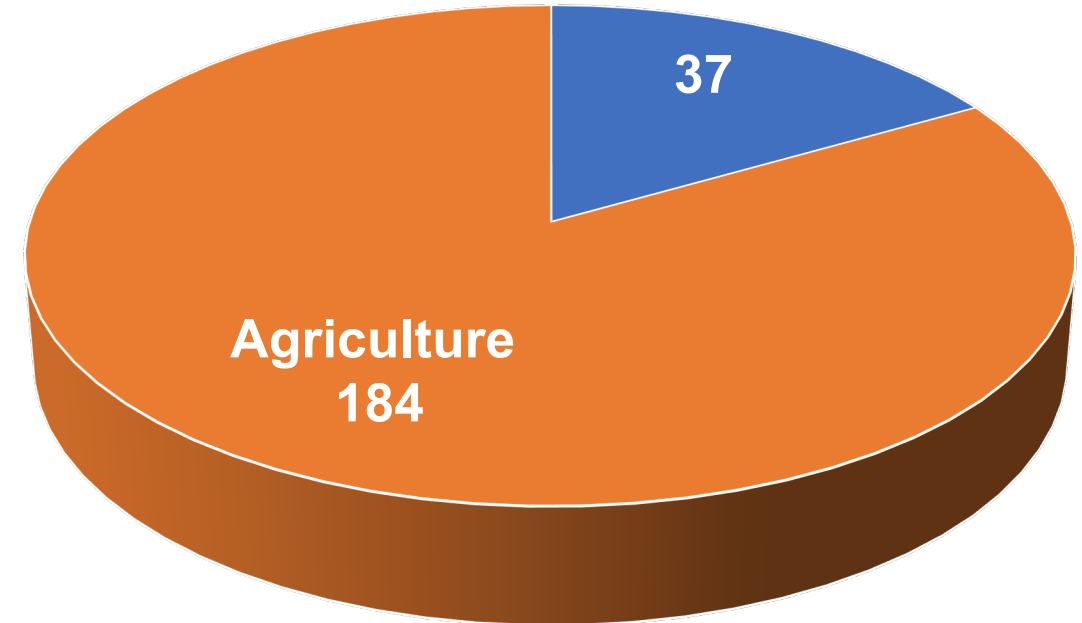
Research Highlights

- The College hosts the 1890 Center of Excellence for Natural Resources, Renewable Energy, and the Environment: A Climate Smart Approach.
- The College was recently awarded a \$5 million grant on “Climate-Smart Fiber Hemp: A Versatile Thread Connecting the Nation’s Underserved Farmers, Climate Change Mitigation and Novel Market Opportunities”.
- The College was recently awarded a \$18 million NextGen grant NEXT Generation Inclusion Consortium (NIC) for Building the Food, Agriculture, Natural Resources, and Human Sciences Pipeline (FANHP)

Total no. of faculty

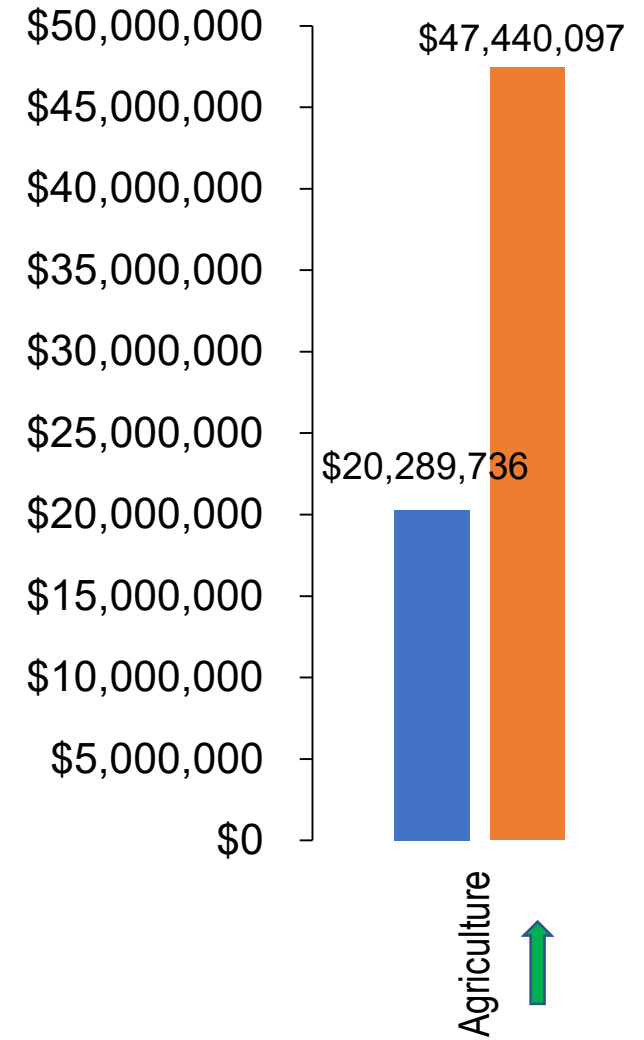
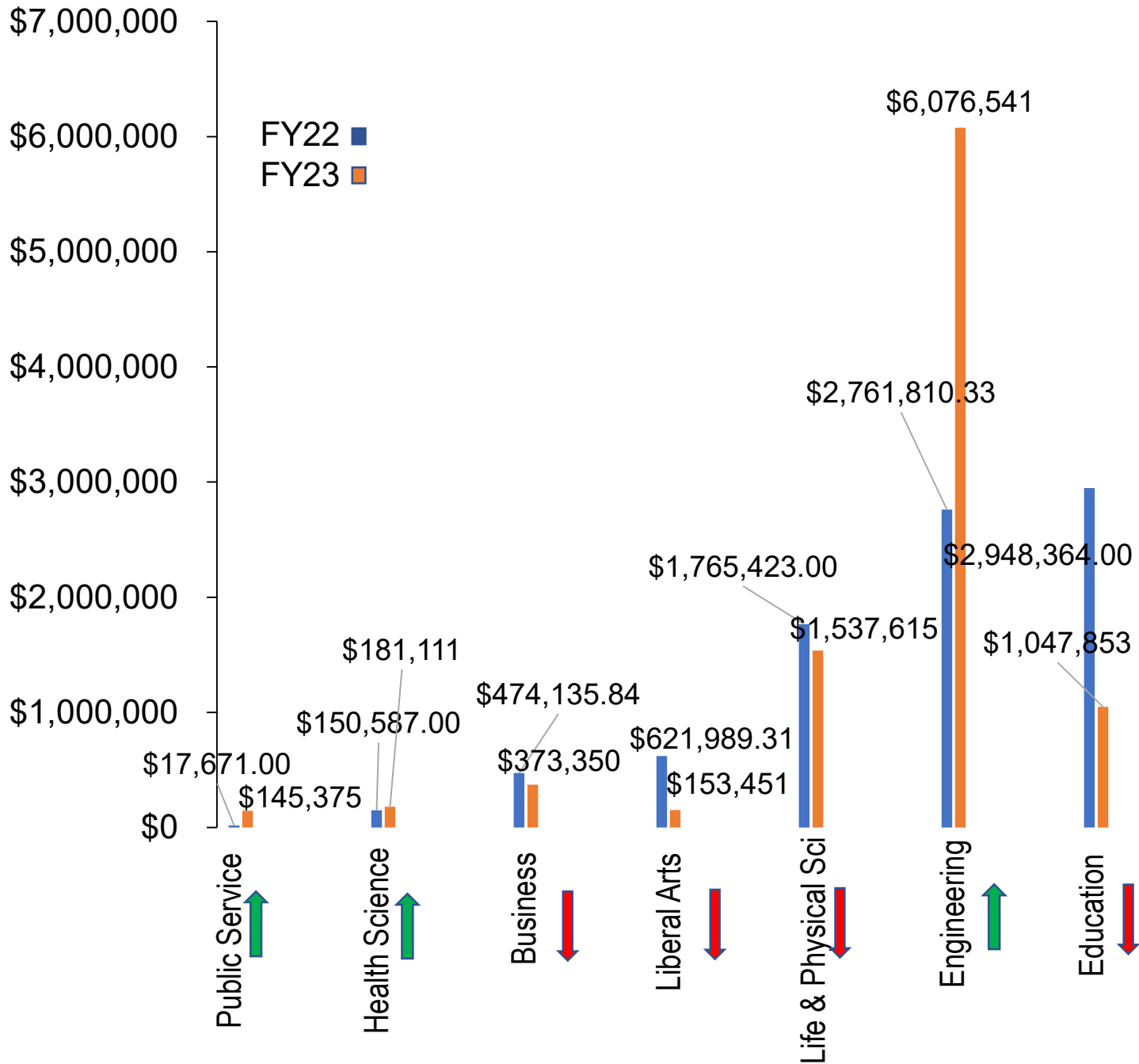
College of Business	30
College of Public Service	14
College of Agriculture	70
College of Engineering	41
College of Education	50
College of Health Sciences	57
College of Business	42
Liberal Arts	99
College of Life and Physical Sciences	60
	463

Total no. of submissions FY23 (221)

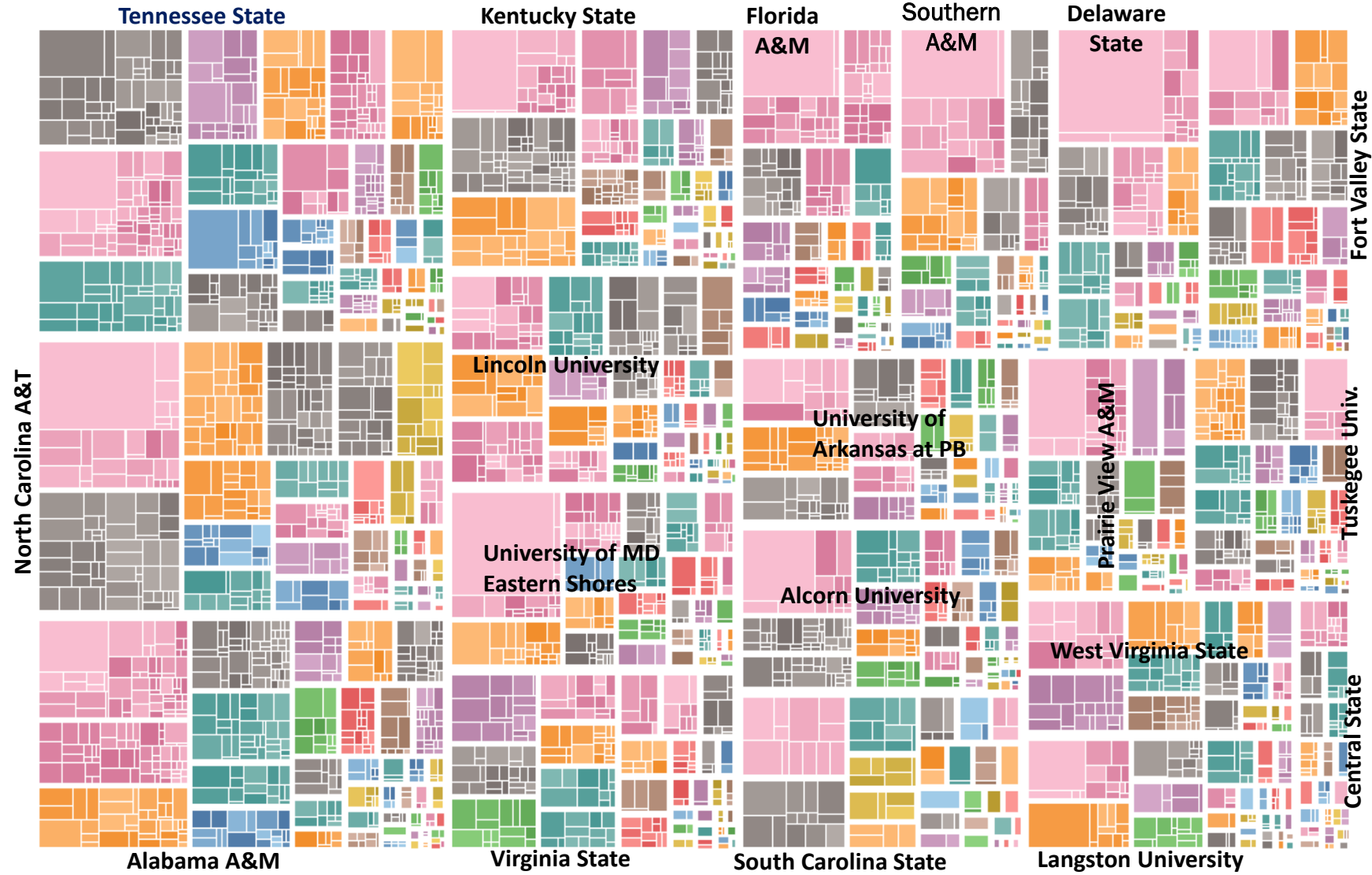


Agriculture comprises 15% of faculty but are responsible for 83% of submissions

Total amount of awards/College



Historical Funding Portfolio Depth/BREADTH for 1890 LGUs



Scholarship

Published 114 articles in peer-reviewed journals, of which

- 53 had students as senior author,
- 61 were faculty publications

Made 248 presentations at professional meetings, of which

- 122 were made by student presenters and
- 114 by faculty presenters

Published 73 Extension, outreach, or popular press articles

Cooperative Extension Program

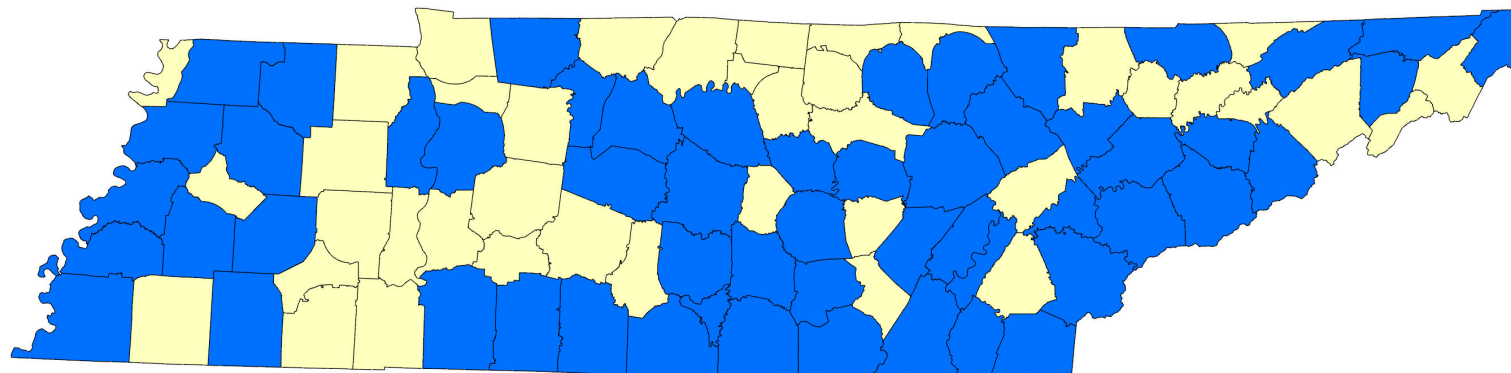
Overview

- Extension is one of the three land-grant missions of TSU
 1. Teaching
 2. Research
 - 3. Extension/Outreach/University-Community Engagement**
- Housed & Integral Part of College of Agriculture
- Largest educational outreach arm of the University
- Mission: is to translate, manage and distribute research-based information to the residents of Tennessee
- ANR, FCS/HS, 4-H & Youth Development and Community & Economic Development (CRED)

Overview

- Largest Extension Program in all 1890 land-grants
- All Extension Faculty is integrated with academics & research
- All Extension Specialists are tenure track faculty
- TSU Extension has 25 Extension Faculty
- TSU Extension has Extension agents in 60 Counties
- TSU Extension & UT Extension have MOU for working together
- TSU Extension is funded by:
 - USDA/NIFA
 - State of Tennessee
 - Local County Governments

Tennessee State University
College of Agriculture
Cooperative Extension Program
Extension staff in 60 Counties



Legend

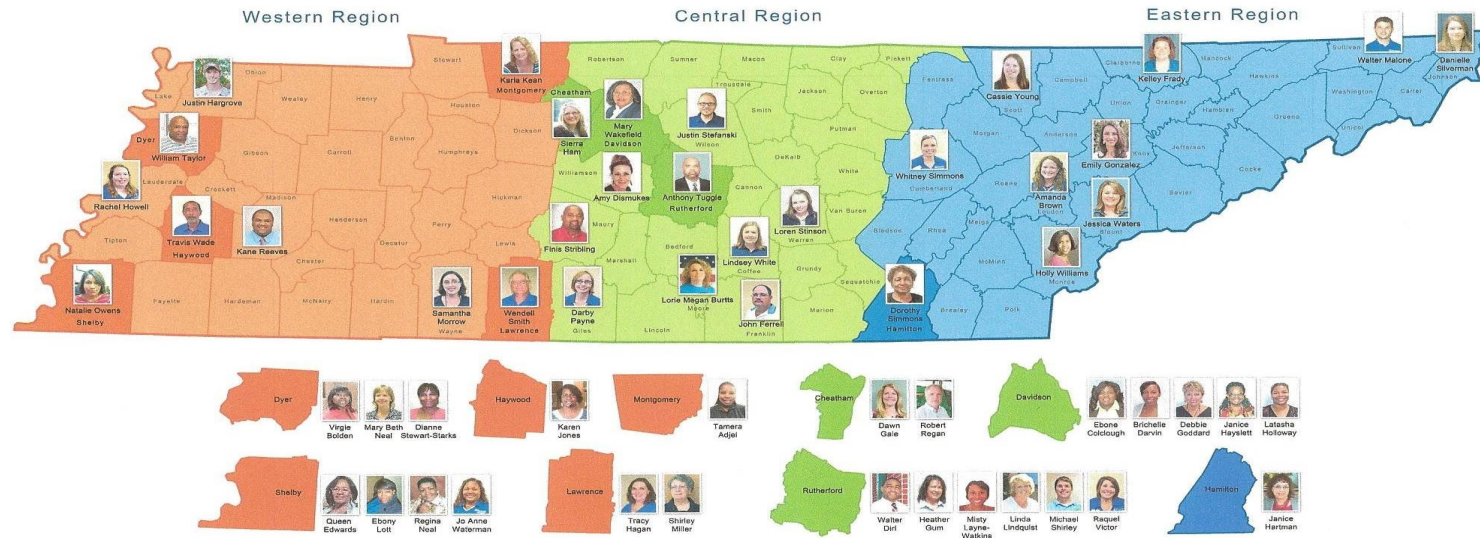
Extension Employees per County

TSU Extension Employee within County

- YES
- NO



College of Agriculture, Human, and Natural Sciences
Cooperative Extension County Locations and Staff



TSU Extension Signature Programs

- TN New Farmer Academy for farmers & veterans
- Small farms outreach for small, minority & women in agriculture
- TSU/TN Small Farms Expo and Farmer Recognition Program
- Organic, Urban & Vertical agriculture
- Industrial hemp research and education
- Digital diagnosis of plant nutrition & Hydroponics
- Biofuels & alternative energy
- Drones for Farmers & 4-H STEM programs
- Food Safety Regulations for food handlers & businesses
- SNAP ED/EFNEP Program
- Supporting families across the lifespan – Family life academy



2022 TENNESSEE SMALL FARM EXPO



SEPTEMBER 8, 2022

9:00 AM - 2:00 PM CST

Tennessee State University Agricultural
Research and Education Center, Nashville, TN

Parking and shuttle service at the Tennessee
State University Gentry Center



-  Small Farm Grant Resources
-  Educational Tours and Workshops
-  Organic Vegetable Production
-  Beekeeping and Apiculture
-  Small Ruminant Management
-  Industrial Hemp Production

 Jaime Madison
 615.963.1351
 jmadis11@tnstate.edu

To register or for more information, please contact Ms. Jaime Madison or scan the QR code.



TSU Extension Hemp Research &
Education Program



Organic Agriculture
Sweet Potatoes



Using a Mobile Demonstration to Talk to Farmers About On-Farm Biodiesel Production





This focus is primarily on how drones can be used in agricultural practices. Farmers participating in our program will learn:

- How to fly a drone through real, hands-on experiences ("fly before you buy")
- How drones can be used in different agricultural applications
- The different types of drones, systems and uses
- Laws and Federal regulations for drone use

June 15, 2021, 4:30pm to 6:30pm
Washington County Fairgrounds
100 Lakewood Street
Gray, TN 37615



Dr. Jennifer Kelly, Program Director
Tennessee State University

TSU SNAP Ed & EFNEP Program



shop. cook. eat.

within your budget.



TSU Extension Community Nutrition Education Program



Tennessee New Farmer Academy

Finis Stribling III

Director of Tennessee New Farmer Academy
and Small Farm program



TENNESSEE NEW FARMER ACADEMY

“Developing Successful Small Farm Enterprises”



- Establish 2014
- Beginning Farmer Educational Resource
- 7 months Certification Program
- Tennessee Department of Ag Tennessee Agriculture Enhancement Program (TAEP) Beginning Farmer Resource
- Provides Good Agriculture Production Practices
- NFA can be used as one year of education/experience for Farm Service Agency beginning farmer loan program
- Provides Hands-on Experiential Learning
- Farm Incubation Opportunity
- TDA, USDA and TN Ag Resources
- \$175.00
- Statewide program
- Since inception Graduated 532 New and Beginning Farmers
- 145 participants enrolled in 2023

Tennessee New Farmer Academy

“Developing Successful Small Farm Enterprises”

Locations:

Western Region – Agricenter International, Memphis, TN

Central Region - Tennessee State University – Campus AREC

Eastern Region – UT/TSU Extension Office – Wartburg, TN

Coordinators:

Jo Anne Waterman – Western Region – 901-752-1207

Karla Gargus & Finis Stribling III - Central Region – 615-965-5449

Jenni Goodrich – Eastern Region – 423-346-3000

NFA Topic: Who's Who in Ag

- Introduce the organizations and faces they will be dealing with
 - NRCS
 - USDA
 - FSA
 - COOP
 - Farm Credit
 - Local Ag Groups
- Networking and Introductions are Key



NFA Topic: Emerging Technology

- Drones
- Hydroponics
- GIS



NFA Topic: Marketing / CSA's

- Emerging Markets
- Regulations
- Presentations By Ag Agencies

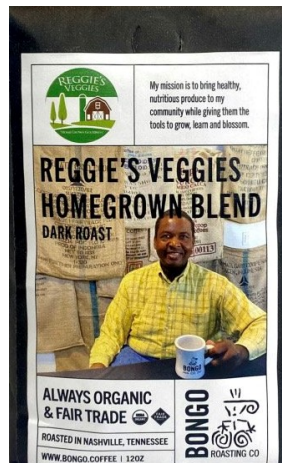


New Farmer Academy Graduate Stories



• Reggie Marshall

- Graduate of the first New Farmer Academy
- Owner of Reggie's Veggies
- President of the TN Fruit & Vegetable Assoc
- President of the Pick TN Board
- UT Commission
- TN State Farm Service Committee Vice-chair
- USDA Fruit and Vegetable Advisory Committee Vice-chair
- TN State Urban Ag Sub-committee
- TDA TN Ag Enhancement Advisory board
- Davidson Co. Ag Extension Advisory Board
- Outreach in the J. C. Napier Community



Partners

