



UTIA
INSTITUTE OF
AGRICULTURE
 THE UNIVERSITY OF TENNESSEE
 Real. Life. Solutions.

Energy & Environmental
 Science Research Building
 CPDC EESRB Building
 April 12, 2019



Program & Schedule

PROGRAM & BUDGET

	GSF	Bid Target	Total Project
Surge Building	20,000	\$6.7m	\$8m
EESRB	157,500	\$76.3m	\$93m
Total	177,500	\$83m	\$101m

PROJECT SCHEDULE

SURGE

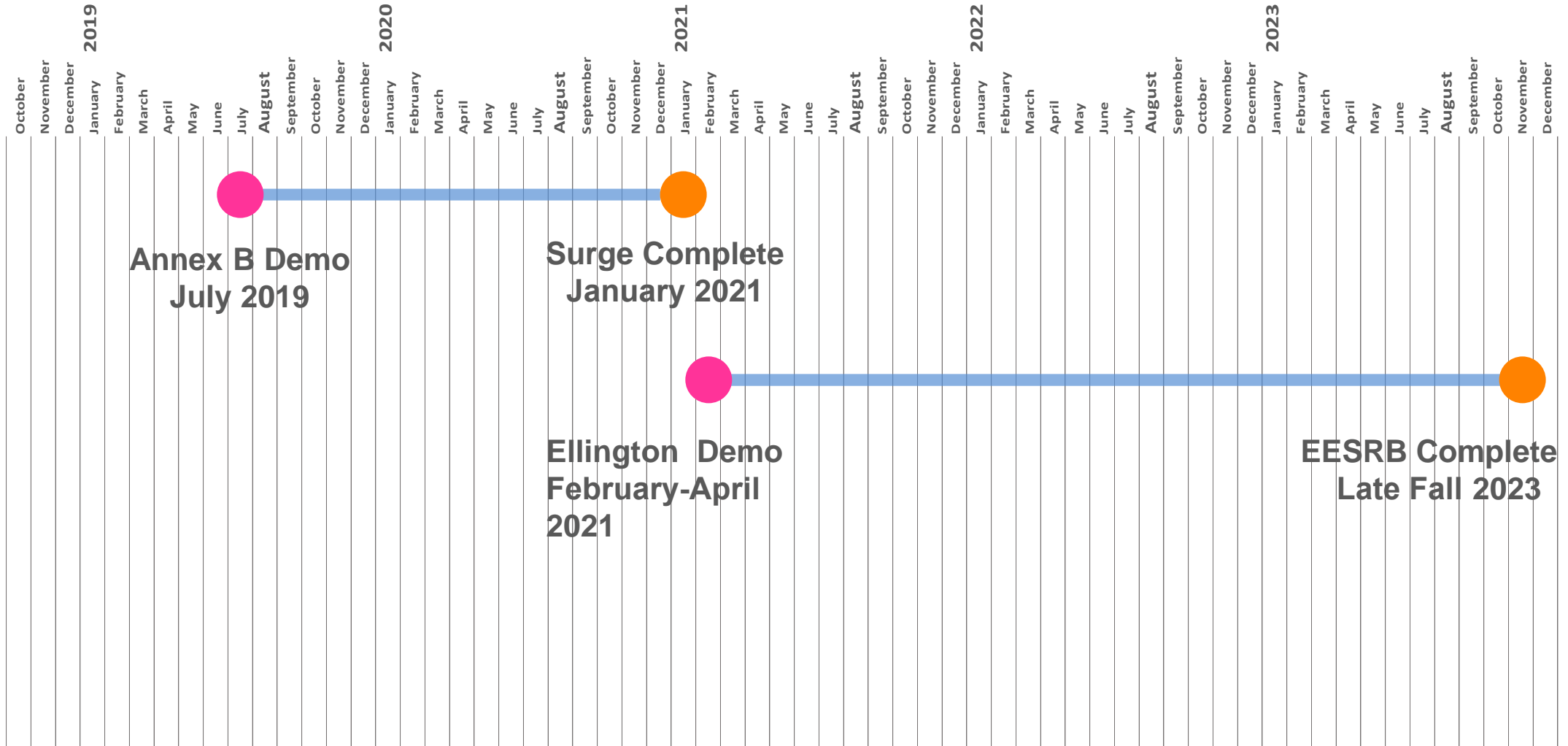
**Annex B Demo
July 2019**

**Surge Complete
January 2021**

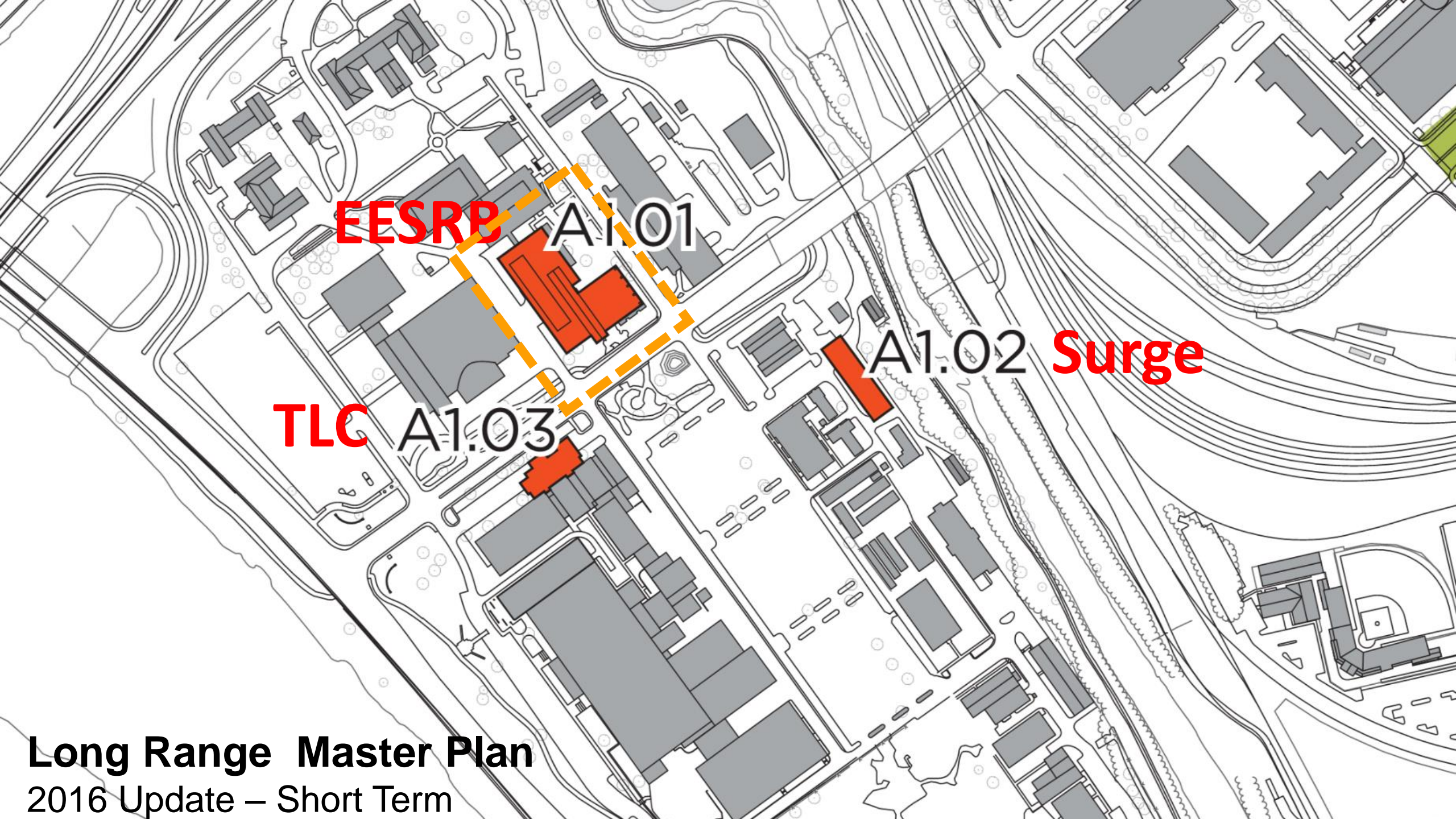
EESRB

**Ellington Demo
February-April
2021**

**EESRB Complete
Late Fall 2023**



EESRB BUILDING



EESRB

A1.01

A1.02 Surge

TLC A1.03

Long Range Master Plan

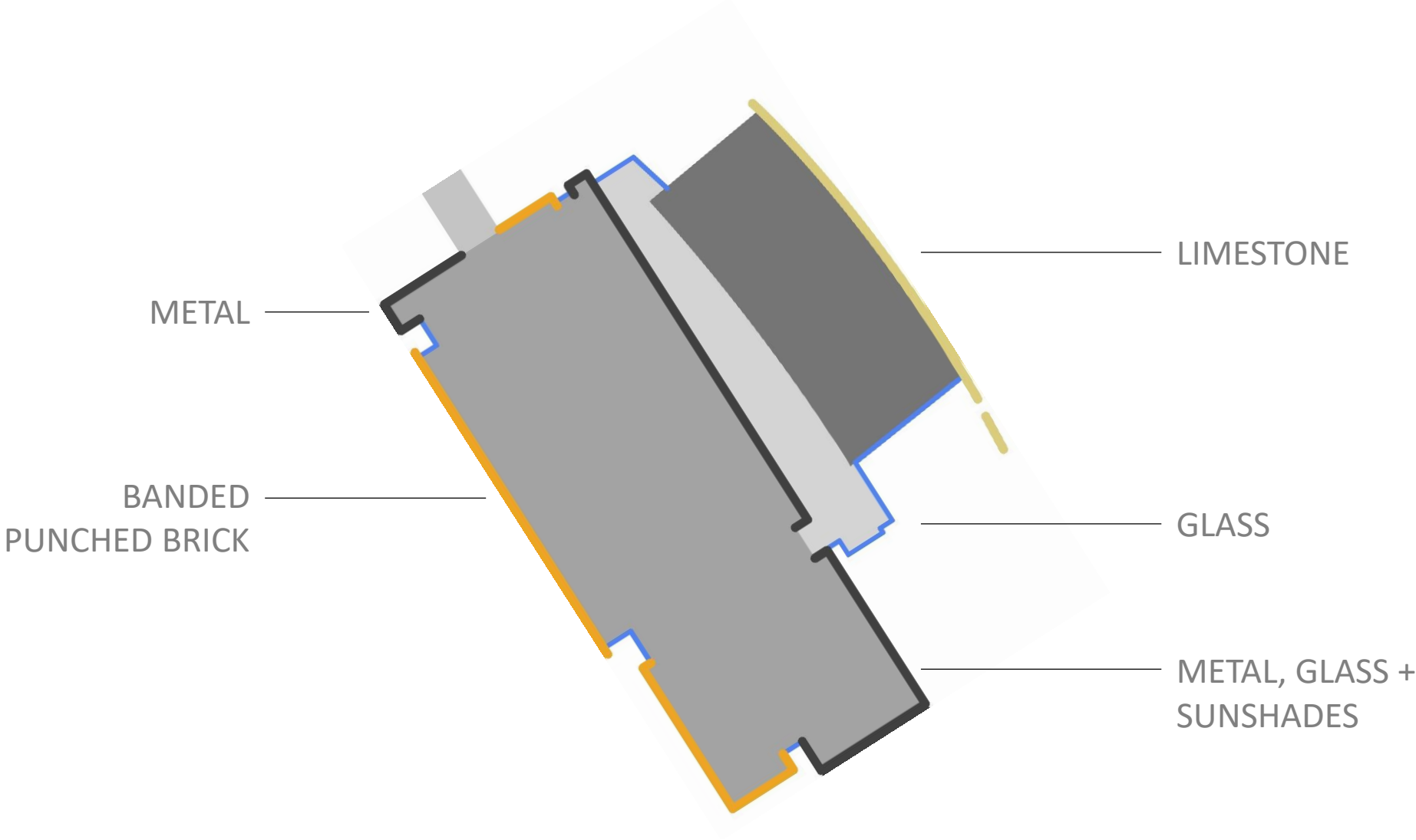
2016 Update – Short Term

EESRB





DESIGN DIAGRAM



CONTEXT

VIEW FROM THE INTERSECTION OF JOE JOHNSON DRIVE AND EJ CHAPMAN DRIVE
| SOUTH EAST



VIEW FROM THE INTERSECTION OF JOE JOHNSON DRIVE AND SERVICE DRIVE
| SOUTH WEST



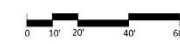
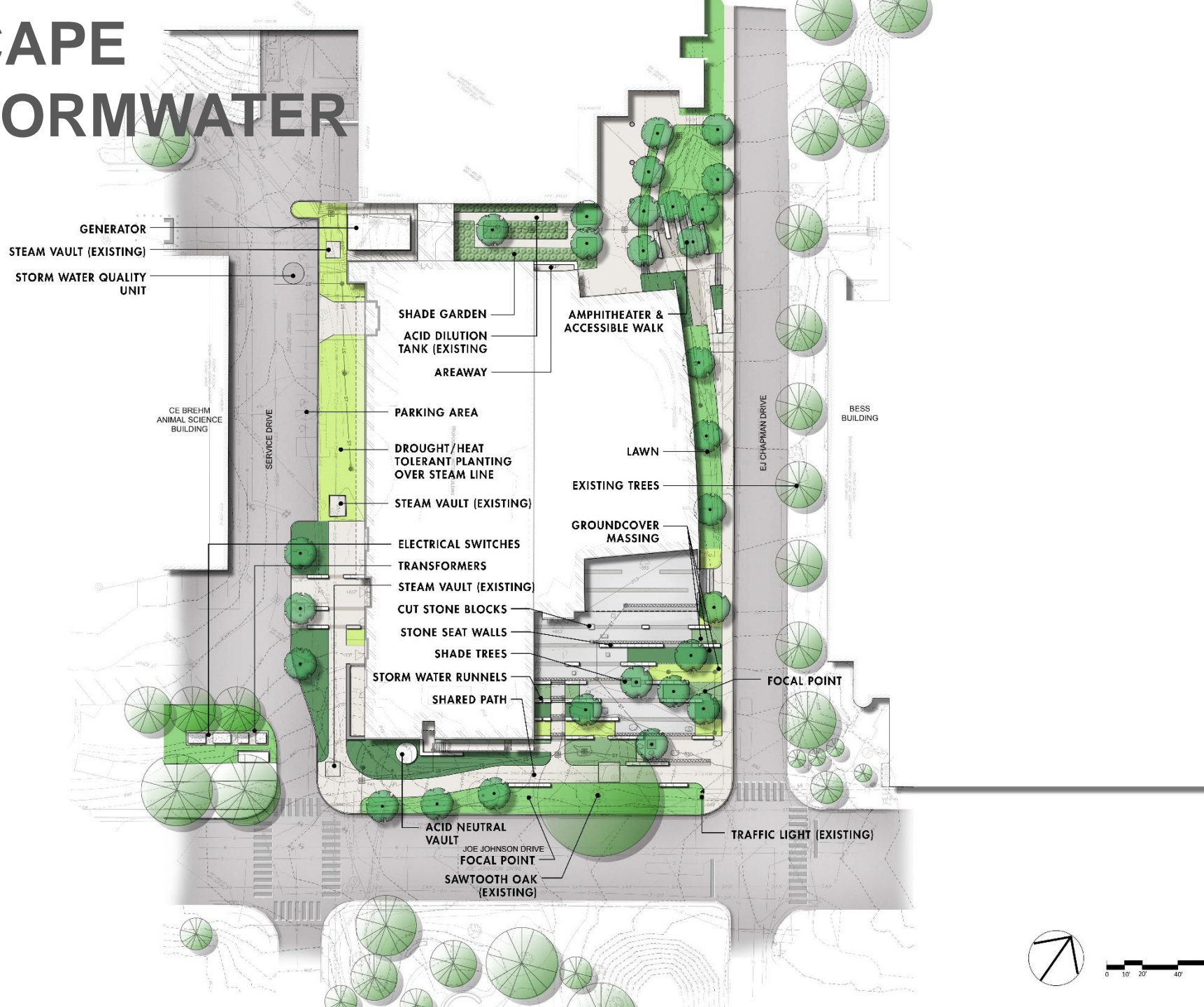
VIEW FROM THE PLANT BIOTECH BUILDING
| NORTH EAST



VIEW FROM EJ CHAPMAN DRIVE
| EAST



LANDSCAPE CIVIL/STORMWATER



GLASS
NEUTRAL OR GRAY

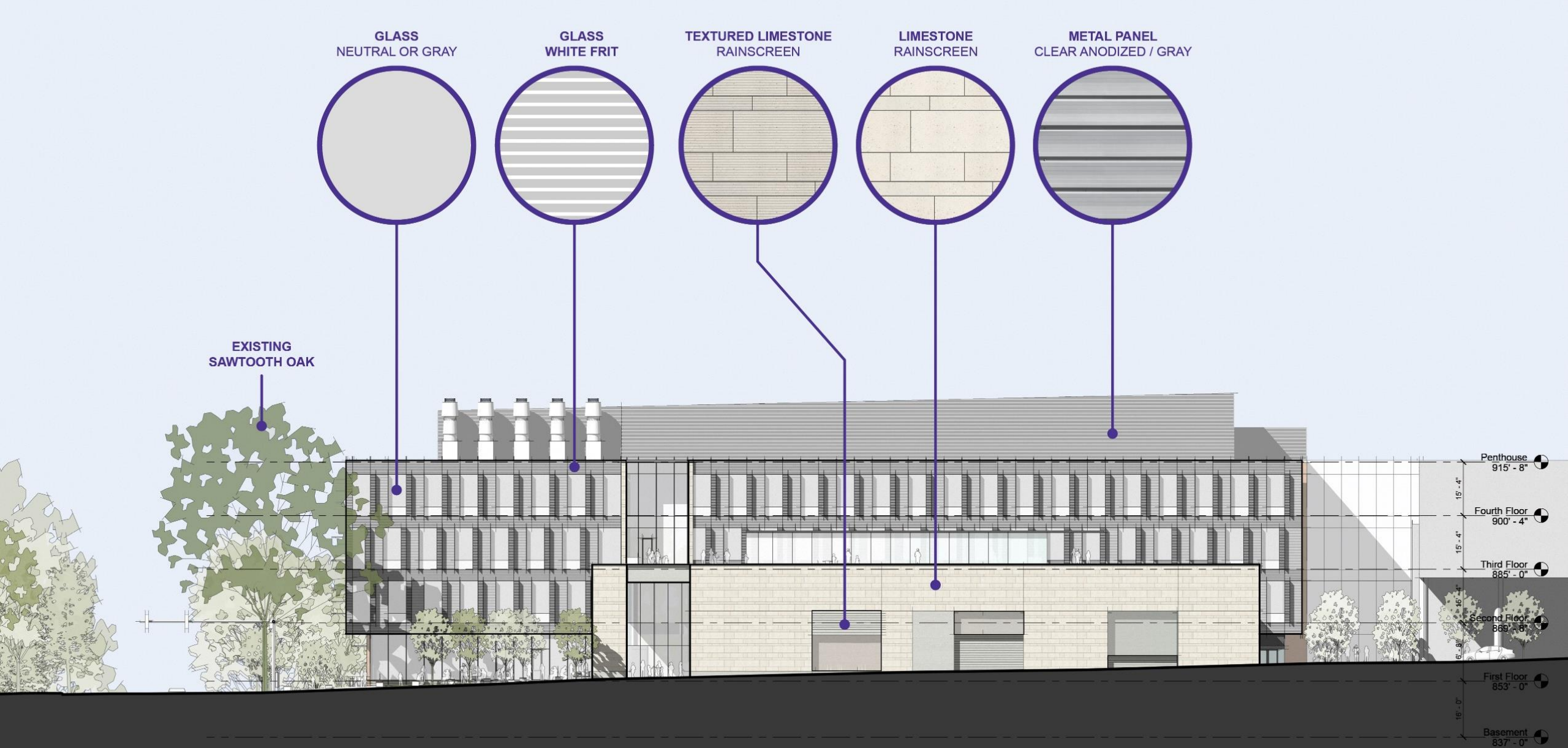
GLASS
WHITE FRIT

TEXTURED LIMESTONE
RAINSCREEN

LIMESTONE
RAINSCREEN

METAL PANEL
CLEAR ANODIZED / GRAY

EXISTING
SAWTOOTH OAK



ELEVATION ALONG EJ CHAPMAN DRIVE | EAST

TEXTURED BRICK
UTK STANDARD

BRICK
UTK STANDARD

METAL PANEL
CLEAR ANODIZED / GRAY

GLASS
WHITE FRIT

GLASS
NEUTRAL OR GRAY

HORIZONTAL SUNSHADE
CLEAR ANODIZED OR
PERFORATED

EXISTING
SAWTOOTH OAK

Penthouse
915' - 8"

Fourth Floor
900' - 4"

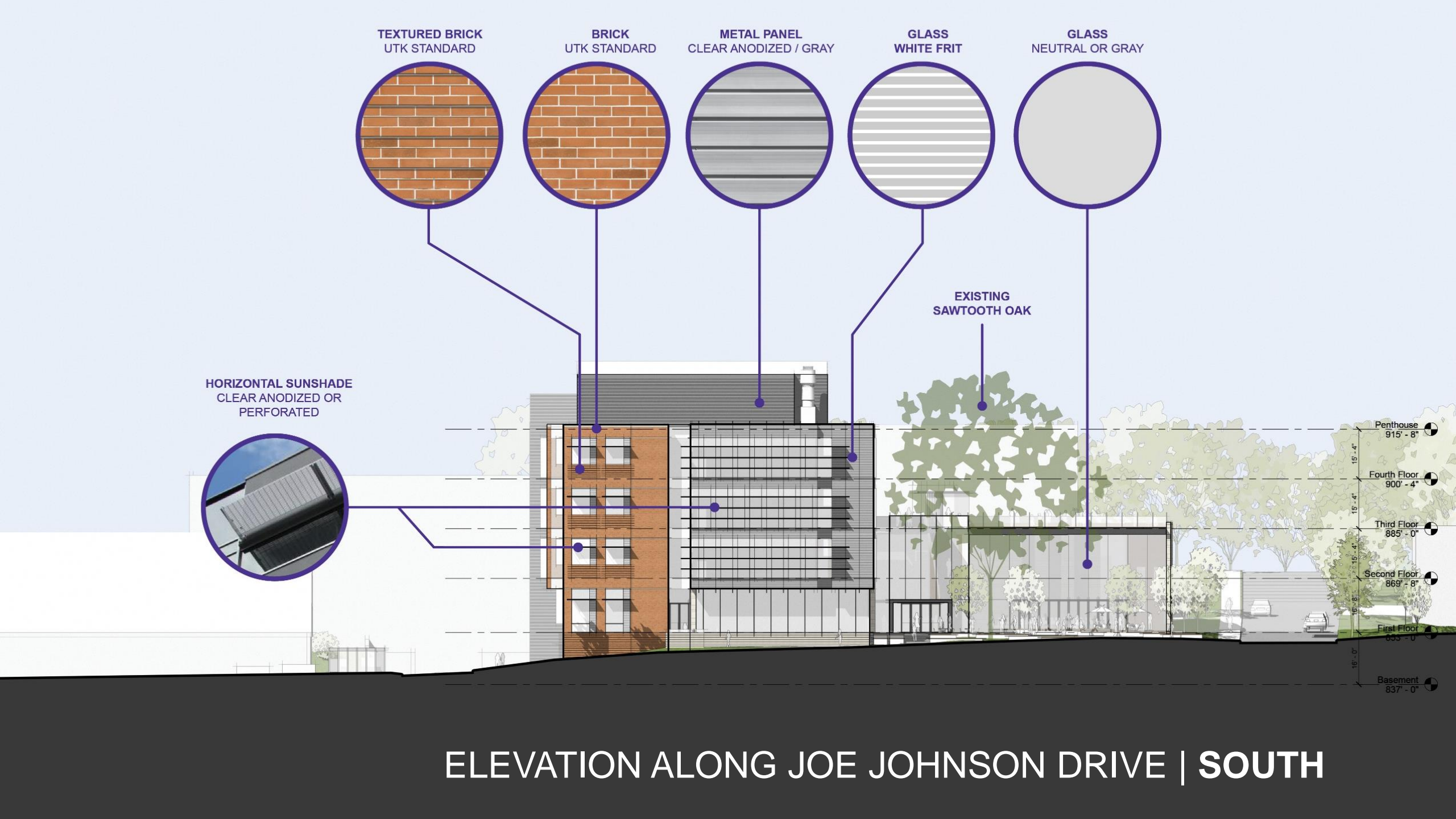
Third Floor
885' - 0"

Second Floor
869' - 8"

First Floor
855' - 0"

Basement
837' - 0"

ELEVATION ALONG JOE JOHNSON DRIVE | SOUTH



TEXTURED BRICK
UTK STANDARD

BRICK
UTK STANDARD

GLASS
WHITE FRIT

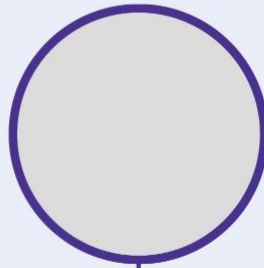
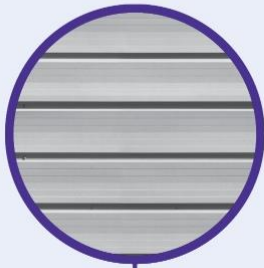
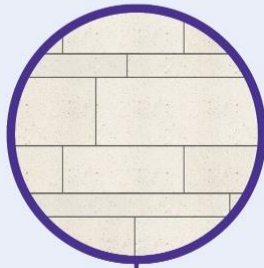
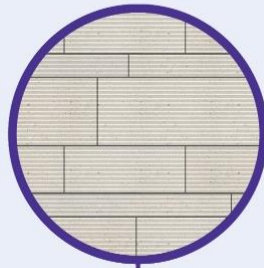
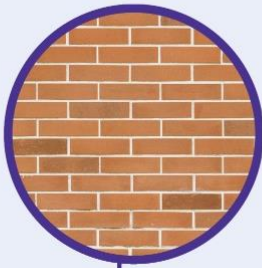
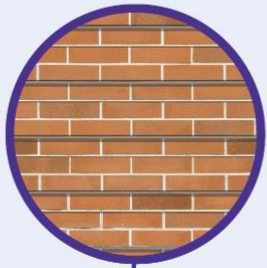
TEXTURED LIMESTONE
RAINSCREEN

LIMESTONE
RAINSCREEN

METAL PANEL
CLEAR ANODIZED / GRAY

GLASS
NEUTRAL OR GRAY

SUNSHADE
PERFORATED OR METAL MESH

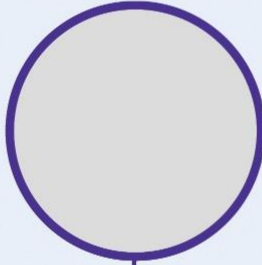


EXISTING
SAWTOOTH OAK

- Penthouse 915' - 8"
- 15' - 4"
- Fourth Floor 900' - 4"
- 15' - 4"
- Third Floor 885' - 0"
- 15' - 4"
- Second Floor 869' - 8"
- 6' - 8"
- First Floor 853' - 0"
- Basement 837' - 0"

ELEVATION ALONG SERVICE DRIVE | WEST

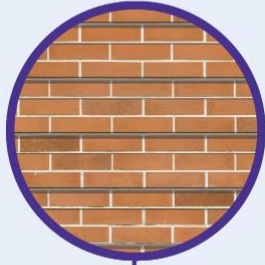
GLASS
NEUTRAL OR GRAY



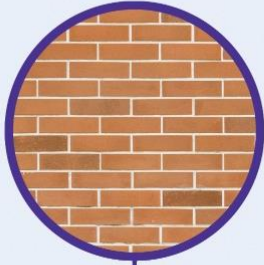
GLASS
WHITE FRIT



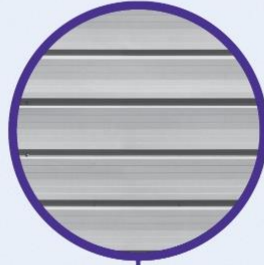
TEXTURED BRICK
UTK STANDARD



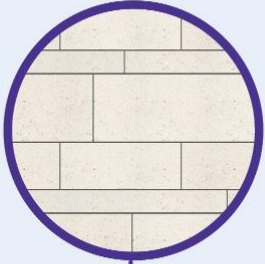
BRICK
UTK STANDARD



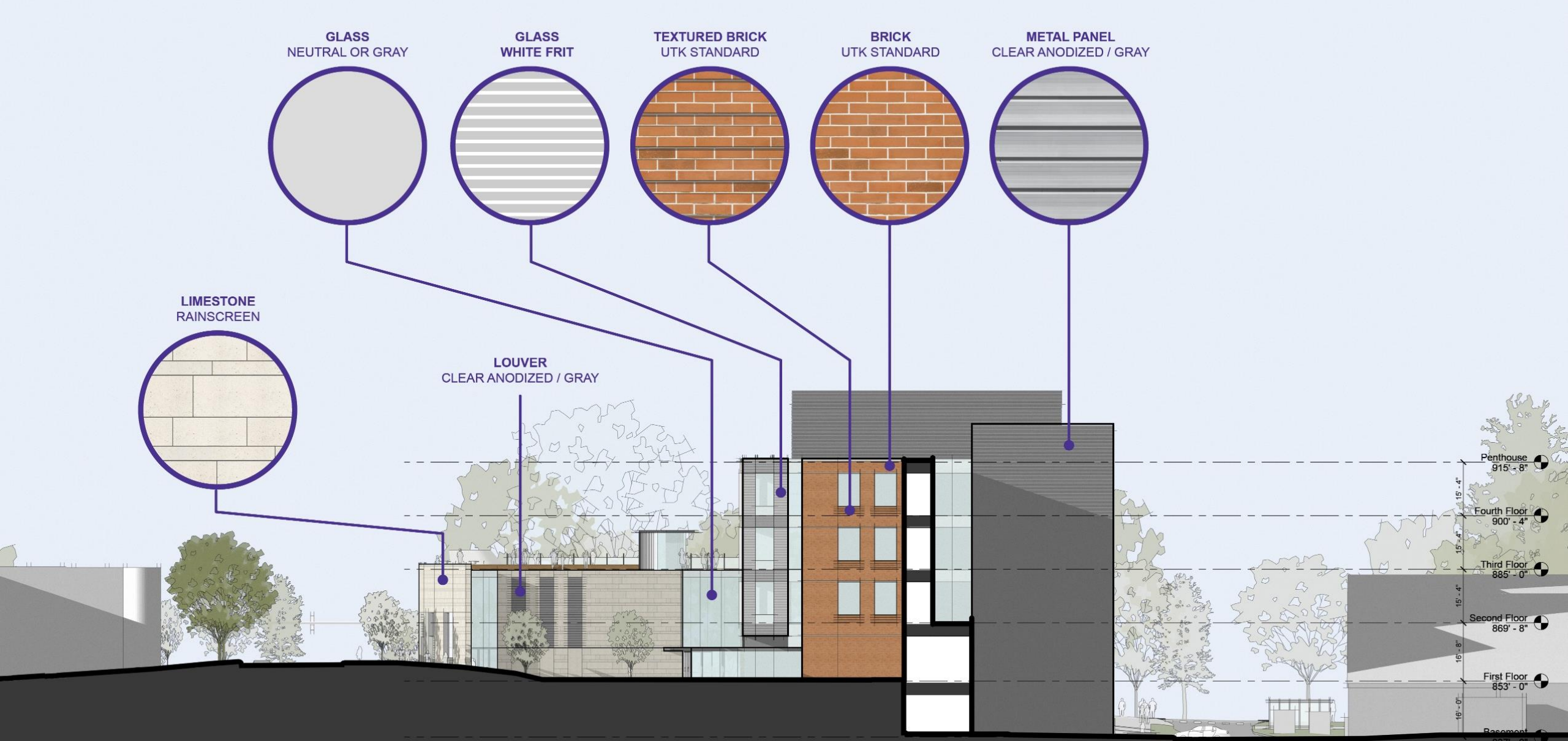
METAL PANEL
CLEAR ANODIZED / GRAY



LIMESTONE
RAINSCREEN

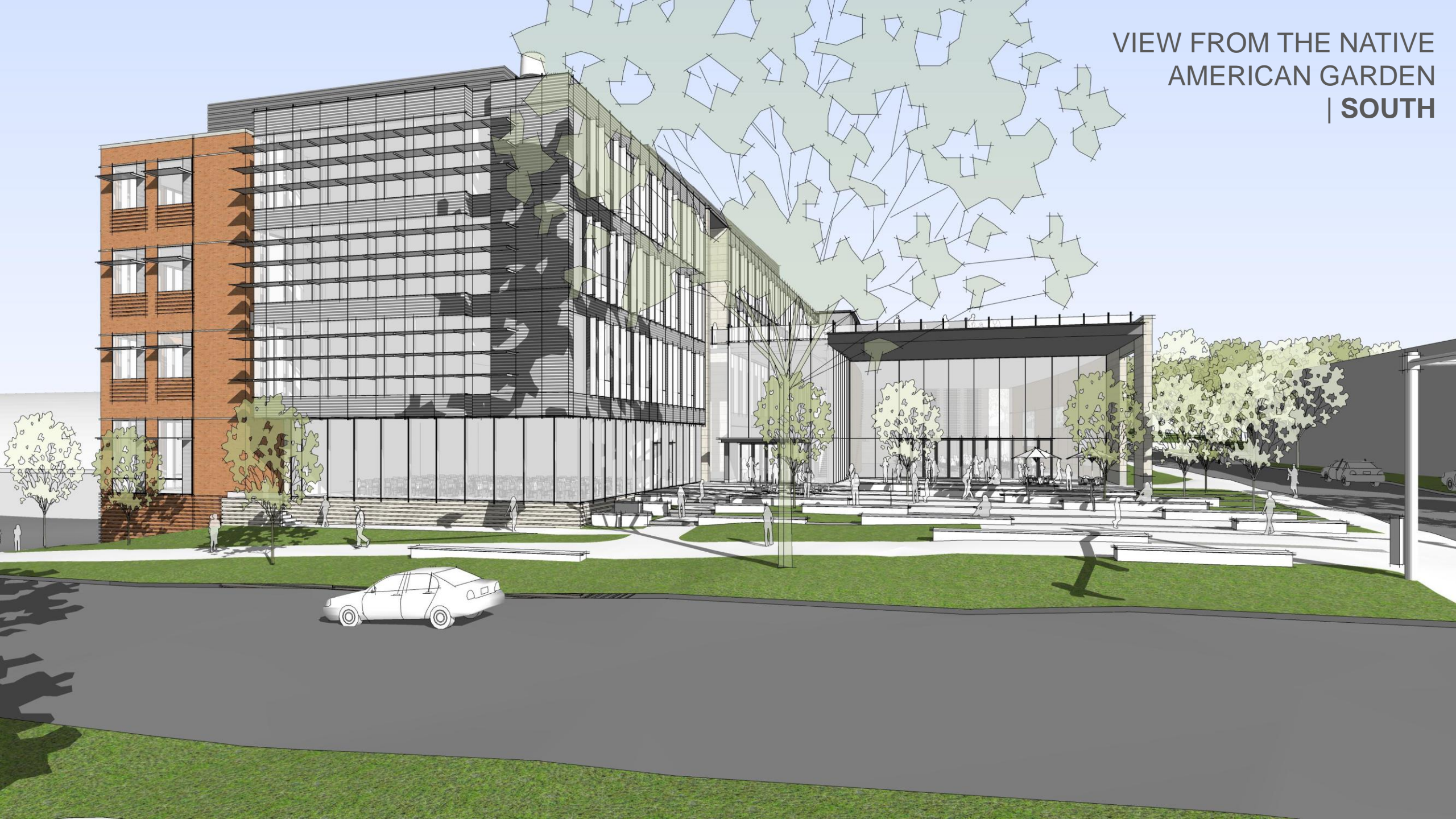


LOUVER
CLEAR ANODIZED / GRAY

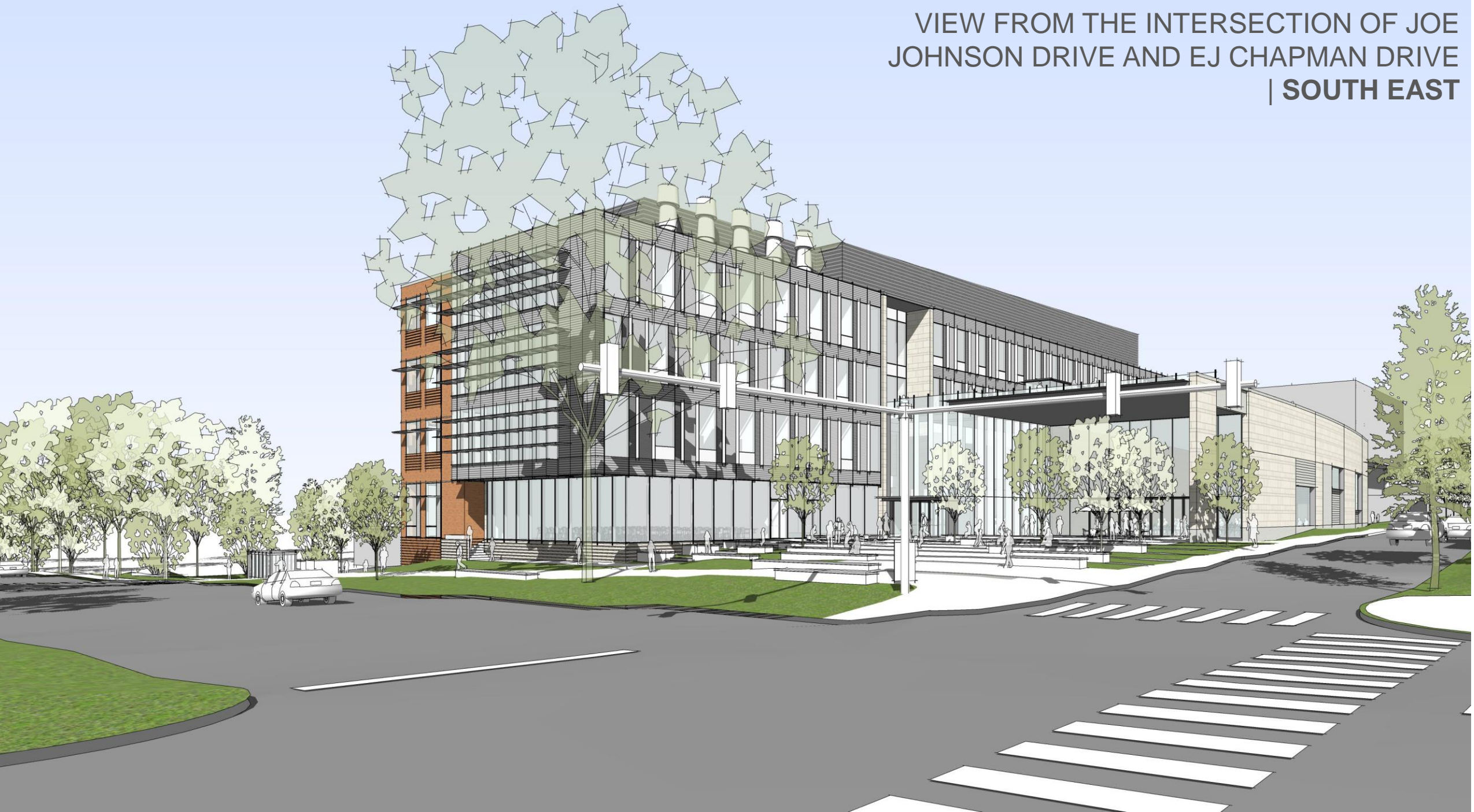


ELEVATION FROM PLANT BIOTECH BUILDING | NORTH

VIEW FROM THE NATIVE
AMERICAN GARDEN
| SOUTH



VIEW FROM THE INTERSECTION OF JOE
JOHNSON DRIVE AND EJ CHAPMAN DRIVE
| SOUTH EAST



VIEW OF ENTRY PLAZA



VIEW FROM EJ CHAPMAN
| EAST



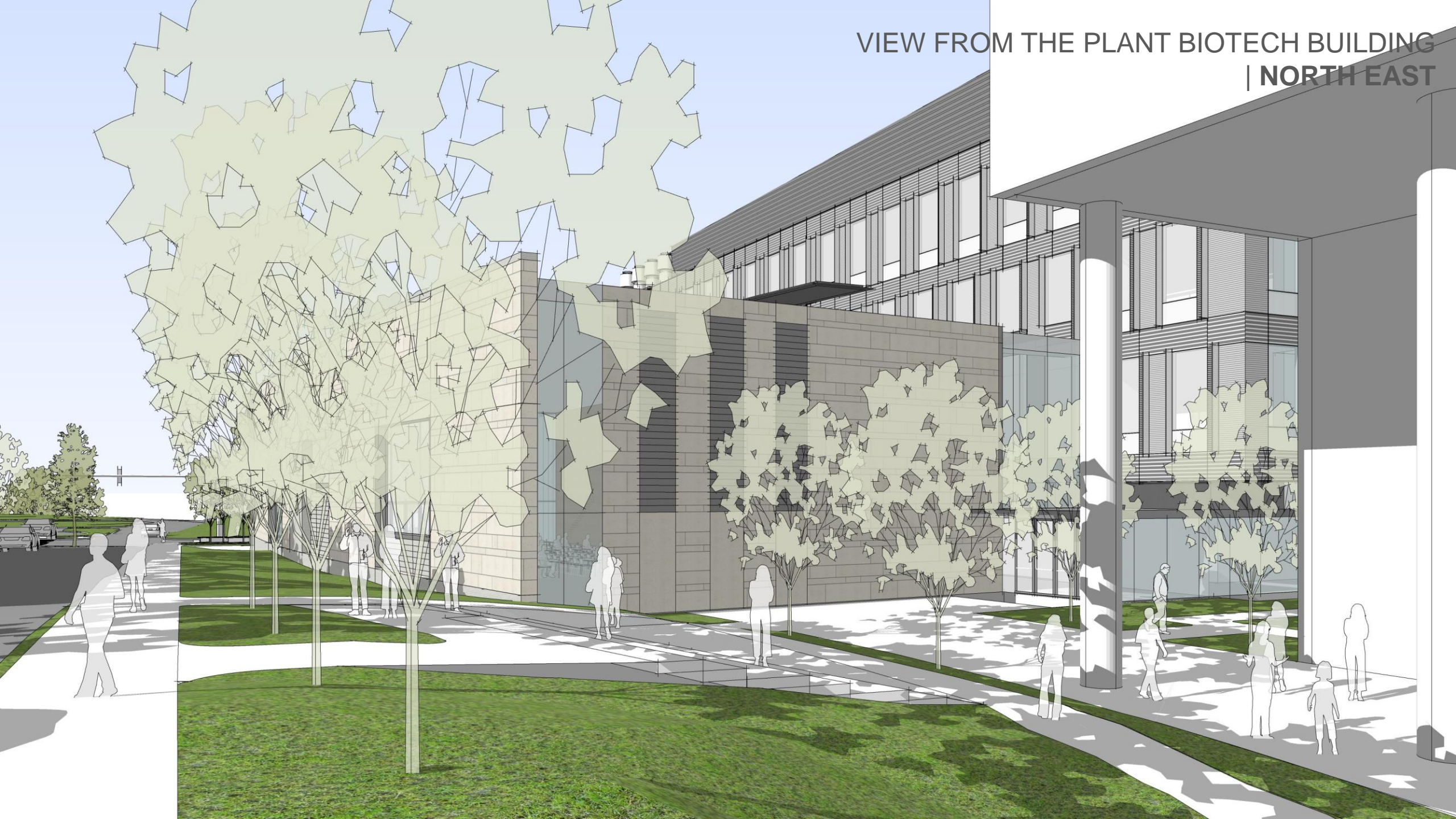
VIEW FROM THE INTERSECTION OF JOE
JOHNSON DRIVE AND SERVICE DRIVE
| SOUTH WEST



VIEW FROM THE VETERINARY MEDICAL CENTER
| SOUTH WEST



VIEW FROM THE PLANT BIOTECH BUILDING
| NORTH EAST







VIEW FROM THE INTERSECTION OF JOE
JOHNSON DRIVE AND EJ CHAPMAN DRIVE
| SOUTH EAST

